



SIXTH FORM PROSPECTUS

SEPTEMBER 2025 ENTRY

Rated
OUTSTANDING
by OFSTED

CONTENTS

INTRODUCTION	4
ENTRY REQUIREMENTS	8
APPLIED SCIENCE	10
ART	12
ART & DESIGN (TEXTILE DESIGN)	14
BIOLOGY	16
BUSINESS STUDIES	18
CHEMISTRY	20
CHILDREN'S PLAY, LEARNING AND DEVELOPMENT	22
COMPUTER SCIENCE	24
CREATIVE DIGITAL MEDIA PRODUCTION (DIGITAL GAMES PRODUCTION)	26
CRIMINOLOGY	28
DANCE	30
DRAMA AND THEATRE STUDIES	31
ECONOMICS	32
ENGLISH LANGUAGE	34
ENGLISH LITERATURE	36
ENVIRONMENTAL SCIENCE	38
FILM STUDIES	40
GEOGRAPHY	42
HEALTH AND SOCIAL CARE	43
HISTORY	44
INFORMATION TECHNOLOGY	46
LAW	48
MATHEMATICAL STUDIES (CORE MATHS)	49
MATHS AND FURTHER MATHS	50
MEDIA STUDIES	52
MODERN FOREIGN LANGUAGES (FRENCH/GERMAN/SPANISH)	54
MUSIC	56
PHILOSOPHY, ETHICS AND THEOLOGY	58
PHOTOGRAPHY	60
PHYSICAL EDUCATION	62
PHYSICS	64
POLITICS	66
PRODUCT DESIGN	67
PSYCHOLOGY	68
SOCIOLOGY	69
ACADEMIC ENRICHMENT QUALIFICATIONS	70
CAREERS	70
DESTINATIONS	71



INTRODUCTION

Myton Sixth Form is about helping you realise your potential. We want you to be successful and happy, whether this is gaining a place at the university or apprenticeship of your choice, getting on in your chosen career, or developing your wider skills. Myton Sixth Form develops your independence and resilience for post-18 learning.

ACADEMIC SUCCESS

We offer students excellent teaching from a team of highly qualified teachers and tutors with a track record of success. Successive Ofsted inspections have noted the 'outstanding' teaching in the Sixth Form as a significant strength of our school.

Historically, our examination results have been consistently outstanding, with most students going on to their first choice of university, including regular entrants to Russell Group universities. In addition, each year, students gain entry into professions and high quality apprenticeships in national companies.

ATTENDANCE

We pride ourselves on our academic success and work ethic, but this only happens with good attendance. The link between outcomes and attendance is well understood and vital for success post 16. As a result, we expect students to attend school every day, starting with form time at 8.40am. All students are expected on site every day until at least lunchtime (1.30pm).

FACILITIES

We moved into our purpose-built Sixth Form block at the front of the school in September 24. The block contains a Sixth Form Café, purpose-built study rooms both for silent and group learning, an IT suite and multiple classrooms. The block therefore acts as a centre of learning as well as a space for personal study and reflection. We encourage students to work on site due to our improved facilities to take advantage of our new

resources. Lessons take place across the whole site in department areas. Outside of the new block, there is also a large library area (LRC) where students can study as well as purpose-built practice rooms for music and Sixth Form art areas.

SUPPORT FOR STUDENTS

We provide a strong pastoral system where students are supported by a dedicated team of tutors who remain with them for the two years of the Sixth Form. They encourage, guide and help them through what can be a challenging time for many students with the level of work required after concerns about their future and changing relationships.

The Head of Sixth Form, Heads of Year and Sixth Form Pastoral Support Tutor also provide a range of support to students on an individual basis and are always available to students or parents for advice.

EXTRA-CURRICULAR OPPORTUNITIES

Our Sixth Form offers extensive opportunities for personal development and resilience. Many students volunteer to help younger students through coaching and mentoring programmes, become Subject Ambassadors to help promote and work with staff in their preferred subject area, or act as tutor group representatives.

Our Sixth Form Leadership group works with the Sixth Form Team to promote and manage events facilitating the whole cohort to take part in charitable and fundraising activities; drama, music and sporting events within school and participate in volunteering opportunities locally. Other opportunities include:

- TEFL course
- Kissing it Better
- Duke of Edinburgh (Gold)
- Law and Politics Societies
- Global Social Leaders
- Sporting activities

HOW MANY SUBJECTS WILL YOU STUDY?

The number of subjects – and the choice of subjects – studied by our Sixth Form students depends on their forecast grades and eventual GCSE results.

All students study 3 subjects throughout Years 12 and 13.

We only accept students starting Sixth Form on 3 x Level 3 courses.

We do not offer A levels in 1 year.

Some students study 4 A levels in Year 12 and Year 13.

There is no requirement for students to take 4 A levels but the ablest students may choose to do so. This is suitable for students who are forecast at least 8 grades at 8/9 at GCSE and who are considering applying to Oxbridge, Medicine, Veterinary Science or other competitive courses.

Additionally we offer Core Maths and the Extended Project Qualification to support numerical and research skills.

Please see the website: www.informedchoices.ac.uk for information on how to choose A level subjects when aiming for Russell Group universities.

PERIOD SIX/TWILIGHT SESSIONS

In order to deliver our wide range of subjects and support university/apprenticeship applications and career opportunities a number of lessons may be timetabled for Period 6, 3.10 – 4.10pm. These are vital to student success and are registered compulsory lessons.

ACADEMIC AND ENRICHMENT QUALIFICATIONS

For more information on additional enrichment qualifications offered please see page 70.



HOW TO CHOOSE YOUR COURSES

The type of course most suitable for your needs depends on your career aspirations and your particular skills, interests and abilities. During Year 11, we will happily provide guidance and advice to help you choose the best courses for you in Sixth Form, regardless of whether you are an existing Myton student or an external candidate.

There are two main considerations when choosing Sixth Form courses:

WHICH SUBJECTS BEST SUIT YOUR ABILITIES AND INTERESTS?

Post-16 courses may be very different from GCSE courses in the same subjects, both in their nature and the skills that they demand. Being good at, or enjoying, a subject at GCSE does not necessarily mean success post 16. Having an interest in that subject and knowing why you want to study it, however, is a good start.

You will need to get as much information as you can about the content of each course, the teaching and learning styles involved and the skills required. It is essential that you discuss any courses that you are considering with either your teacher, tutor or the Head of Department, who will be able to advise you not only of the nature of the course, but also on your suitability to follow the subject successfully in the Sixth Form. External students should feel free to email the departmental contact with any questions.

WHICH SUBJECTS ARE MOST APPROPRIATE FOR THE CAREER YOU INTEND TO FOLLOW?

You may be considering higher education, and intending to study a particular subject there. In this case, you need to check to see what subjects are required to take that degree course. This is particularly true in Science and Mathematics where, for example, Physics (and often Chemistry) may require Mathematics, and Biology often requires Chemistry. The universities' website UCAS.com is particularly useful for this as you can check what subjects are needed for certain degree courses. You will also receive individual advice and guidance from the Sixth Form team during the application process.

If you are not sure what course you want to study at university or what route to take in the future, the best choice is to keep your options open.

This website will help you find out which subjects are best for certain careers and university courses: www.informedchoices.ac.uk

It is important to do your research in order to avoid certain university options being closed to you due to your choice of subjects.

ARE ALL LEVEL 3 COURSES THE SAME?

All our Level 3 qualifications have the same UCAS points as A levels and are not lesser qualifications. Please look at all the courses on offer to see which ones will suit you best.

SUBJECT COMBINATIONS AND ENTRY REQUIREMENTS

You have a free choice of A level courses in any combination but if a course does not get sufficient numbers we may not be able to run it. Also there may be some timetable restrictions which may make certain combinations unavailable.

For 2025 entry, there may be some restrictions on subject combinations depending on the outcome of the Government Curriculum Review Post 16. At this time we are offering free choice of subjects but may have to make changes once the review is complete. We will notify applicants of any changes when we know more in 2025.

We have a minimum entry requirement of grade 4 in both Maths and English Language. Please also look carefully at each subject to check you are eligible to take the course.

KEY DATES	
Deadline for applications <i>(apply via our website)</i>	3 Jan 2025
Applicant interviews with Sixth Form Team <i>(external applicants may be invited for after-school interviews)</i>	Feb – Mar 2025
Offers made to successful applicants	w/c 7 April 2025
Sixth Form Taster Day	3 July 2025
GCSE Results Day	21 Aug 2025
Enrol for Myton Sixth Form no later than 3pm	21 Aug 2025

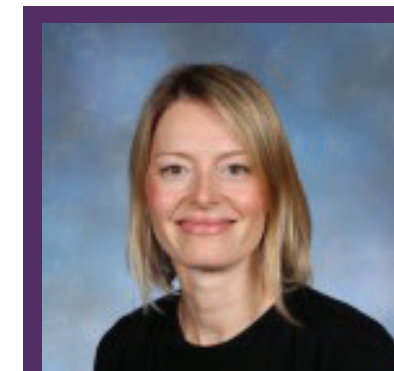
THE SIXTH FORM TEAM



Ms Julie Stevens
Head of Sixth Form
stevens.j@myton.co.uk



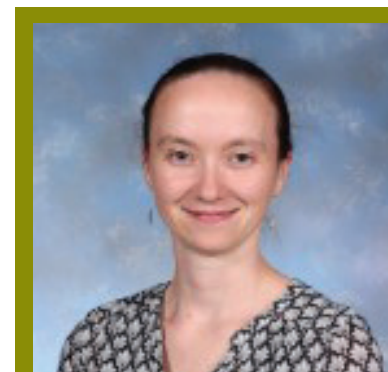
Mr Thomas Garner
Assistant Head of Sixth Form
garner.t@myton.co.uk



Mrs Jane Millington
Assistant Head of Sixth Form
millington.j@myton.co.uk



Mrs Jan Voss
Sixth Form Pastoral Support
voss.j@myton.co.uk



Mrs Colleen Walkingshaw
Sixth Form Manager
walkingshaw.c@myton.co.uk



Mr Andrew Griffin
Sixth Form Administrator
griffin.a@myton.co.uk



Mrs Colette Wedgbrow
Careers Advisor
wedgbrow.c@myton.co.uk



Ms Shabana Akram
SENCO and Assistant Head
akram.s@myton.co.uk

SIXTH FORM COURSES – WHAT GCSEs WILL I NEED?

We have a minimum entry requirement of grade 4 in both Maths and English Language. Additional subject entry requirements for each subject are listed below. There may be some flexibility around these. Please contact Ms Stevens if you have any queries. English can be either Literature or Language unless specifically stated.

SUBJECT	QUALIFICATION	MINIMUM ENTRY REQUIREMENTS
Applied Science	BTEC	<ul style="list-style-type: none"> English 4 Maths 4 Combined Sciences 4-4
Art	A level	<ul style="list-style-type: none"> Art 6
Art & Design (Textile Design)	A level	<ul style="list-style-type: none"> Textiles, Photography or Art 6
Biology	A level	<ul style="list-style-type: none"> Biology 6 or 6-6 in GCSE Combined Sciences Maths 6
Business Studies	A level	<ul style="list-style-type: none"> Maths 5 English 5
Chemistry	A level	<ul style="list-style-type: none"> Chemistry 6 or 6-6 in GCSE Combined Sciences Maths 6
Children's Play, Learning and Development	BTEC	<ul style="list-style-type: none"> English 4
Computer Science	A level	<ul style="list-style-type: none"> Computer Science 6 Maths 5
Creative Digital Media Production (Digital Games Production)	BTEC	<ul style="list-style-type: none"> English 4 A genuine interest in the gaming industry
Criminology	Level 3 Applied Diploma	<ul style="list-style-type: none"> English Language 4
Dance	BTEC	<ul style="list-style-type: none"> English 5 Practical dance experience
Drama and Theatre Studies	A level	<ul style="list-style-type: none"> Drama 5 English 5
Economics	A level	<ul style="list-style-type: none"> Maths 5 English 6
English Language	A level	<ul style="list-style-type: none"> English Language and Literature 6 (both)
English Literature	A level	<ul style="list-style-type: none"> English Language and Literature 6 (both)
Environmental Science	A level	<ul style="list-style-type: none"> 2 separate sciences at grade 5 or 5-5 in GCSE Combined Sciences Maths 5 Geography 5
Film Studies	A level	<ul style="list-style-type: none"> English 5 Able to demonstrate a genuine interest in the film industry or film production

SUBJECT	QUALIFICATION	MINIMUM ENTRY REQUIREMENTS
Geography	A level	<ul style="list-style-type: none"> Geography 6 Grade 5 in Maths and English
Health and Social Care	BTEC	<ul style="list-style-type: none"> English 4 Merit if studying Level 2 BTEC Health and Social Care
History	A level	<ul style="list-style-type: none"> History 5 or English 5 (if not taking GCSE History)
IT	Level 3 Cambridge Technical Extended Certificate	<ul style="list-style-type: none"> Grade 4 in Maths and English
Law	A level	<ul style="list-style-type: none"> Grade 6 in English Language
Mathematical Studies (Core Maths)	A level	<ul style="list-style-type: none"> Maths 4
Maths	A level	<ul style="list-style-type: none"> Maths 7
Further Maths	A level	<ul style="list-style-type: none"> Maths 7
Media Studies	A level	<ul style="list-style-type: none"> English 5 Able to demonstrate a clear interest in media
MFL(French/German/Spanish)	A level	<ul style="list-style-type: none"> Chosen language 6
Music	A level	<ul style="list-style-type: none"> Music 6 Students with a high level of performing skills and theoretical knowledge may be considered
Philosophy, Ethics and Theology	A level	<ul style="list-style-type: none"> RE 5 English 5
Photography	A level	<ul style="list-style-type: none"> Grade 6 in either GCSE Photography, Art or Media Non-specialist students may be considered upon submission of a practical portfolio of photography work
Physical Education	A level	<ul style="list-style-type: none"> PE 5 Grade 5 in a Science A strength in 1 practical sport or as a coach
Physics	A level	<ul style="list-style-type: none"> Physics 6 or 6-6 in GCSE Combined Sciences Maths 6
Politics	A level	<ul style="list-style-type: none"> English Language 5
Product Design	A level	<ul style="list-style-type: none"> Design Technology 6 Maths 5 English 5
Psychology	A level	<ul style="list-style-type: none"> English Language 5 Grade 5 in Maths or Combined or Triple Science
Sociology	A level	<ul style="list-style-type: none"> English Language 5

APPLIED SCIENCE

DEPARTMENTAL CONTACT: Mrs Tonry – tonry.e@myton.co.uk

EXAMINING BOARD AND QUALIFICATION: OCR – LEVEL 3 AAQ

ENTRY REQUIREMENTS: At least a grade 4 in GCSE English and GCSE Maths. At least grade 4s in Science subjects (4-4)

WHY STUDY THIS SUBJECT?

This qualification provides you with an understanding of applied science practical techniques and applications. Through a combination of theoretical study and hands on experience, you will develop the necessary knowledge and skills that can support progression to higher education study.

You might be interested in this qualification if you want to develop key theoretical knowledge and understanding of the subject, but also apply what you learn to different situations and contexts and practical tasks, such as:

- Researching the fundamentals of science
- Planning and performing laboratory investigations

This qualification will complement other learning that you're completing at Key Stage 5.

It will be part of your studies along with two further Level 3 qualifications.

WHAT SKILLS WILL I DEVELOP?

The qualification will help you develop independence and confidence in using skills that are relevant to the sector and that prepare you for progressing to university courses where independent study skills are needed.

You will develop the following transferable skills that can be used in both higher education and other life and work situations:

- Communicating effectively with individuals or groups
- Researching topic areas and recording research sources, then using them to interpret findings and present evidence
- Problem solving when matching and analysing data

WHAT WILL I STUDY?

OCR Level 3 Alternative Academic Qualification
Cambridge Advanced National in Applied Science
(Extended Certificate)

For this qualification, students must complete five units:

- two mandatory externally assessed units
- one mandatory NEA unit
- two optional NEA units

Includes aspects of Biology, Chemistry, and Physics alongside science practical skills. Option units will cover Forensic Biology which links to the previous Forensic Investigation qualification offered.

HOW WILL I BE ASSESSED?

The qualification is made up of 50% examined content and 50% non examined assessment (NEA) content.

This approach supports you to develop both theoretical knowledge and understanding and the skills needed to apply it in different contexts, helping you to develop a broad and relevant set of skills and experiences.



Includes aspects of A level Biology, A level Chemistry, and A level Physics.

Option units will cover Forensic Biology which links to the previous Forensic Investigation qualification offered.

WHAT ARE MY POST-18 OPTIONS?

Taken alongside other qualifications, this course will prepare students for progression to a wider range of degree programmes.

Learners should always check the entry requirements with specific higher education providers.

ART

DEPARTMENTAL CONTACT: Mr Meredith – meredith.s@myton.co.uk

EXAMINING BOARD AND QUALIFICATION: OCR – A LEVEL FINE ART

ENTRY REQUIREMENTS: At least a grade 6 in GCSE Art

WHY STUDY THIS SUBJECT?

If you have an aptitude for art, are creative, imaginative and enthusiastic, but above all, have ideas to communicate, then you will love this subject. You will also need to have good general drawing and painting ability and a sound knowledge and understanding of art media in order to succeed.

Exploration and experimentation at A level are certainly encouraged and so it is important to understand that you will be trying new ways of working and taking a few more risks than perhaps you did at GCSE.

If you have a genuine interest in the world of art, from the old masters to the contemporary and you love the process of creating art, then this could certainly be the course for you.

A level Fine Art is an incredibly rewarding course for motivated students, however you should be prepared to work hard at developing your skills and please remember that the production of quality work takes time. Success in this subject requires determination and dedication but above all, self-motivation, organisation and a love of art.

WHAT SKILLS WILL I DEVELOP?

The skills you gain will be varied. The main purpose of any art course is to develop your ability to appreciate

the visual world and to respond to it in a personal and creative way. You will also develop a working knowledge of materials, practices and techniques within art.

You will develop methods to interpret and convey your ideas and feelings, and will be given opportunities to build on existing creative and imaginative skills. You will also develop a specialist vocabulary, knowledge and understanding of art and its place in history and contemporary society.

WHAT WILL I STUDY?

YEAR 12

During the first two terms, students will produce a portfolio of practical work which demonstrates their personal response to an initial starting point which we will provide. Students will be encouraged to experiment with their own ideas, a range of media and develop their critical/contextual awareness. The development and exploration of this starting point should conclude with a final realisation which brings together the students' ideas.

For the rest of the year, students explore their own interests and create starting points that they wish to pursue. This work will be used as part of the 'personal investigation coursework' which makes up 60% of the overall A level.

YEAR 13

Component 1: Personal Investigation. Candidates will be required to submit two elements for this component. A portfolio of practical work showing their personal response to their own starting point and a related written study. Within this unit (the personal investigation), students develop a personal project based entirely on their own ideas, issues or concepts. This is supported by a written element (a related personal study) of between 1000-3000 words.

Component 2: Externally Set Task. The paper is issued in January and provides candidates with a number of themes, each with a range of written and visual starting points, briefs and stimuli. From these, one must be selected and students develop their ideas over a 12-week period. At the end of this there will be 15 hours of supervised time in which students will aim to realise their ideas into an outcome.

Areas of study

You are required to work/experiment in one or more of these areas:

- Painting, drawing and mixed media including collage and assemblage
- Sculpture, including ceramic sculpture
- Land art, installation and construction
- Printmaking
- Photography/Film

HOW WILL I BE ASSESSED?

The coursework (Component 1) is worth 60% of the overall A level.

The externally set task (Component 2) is worth 40% of the total A level.



Students say

"I can't wait to continue my art studies at university. I've learned so much already."

"Thanks for valuing me, getting to know me and making me the artist I am today."

"The subject allows you to express yourself which I find to be a key aspect of being a teenager."

"A friendly supportive department that gives so much time and helps to inspire."

"One of the subjects that I truly enjoy."

"Staff guidance has helped me to progress in my work to the next level."

"Art was more than just a subject to me – the experience has helped with my own wellbeing."



WHAT ARE MY POST-18 OPTIONS?

For those who do intend to take the subject beyond A level there are a number of opportunities.

Further study in Art and Design (Foundation Courses) at Art College is the normal route taken before being accepted onto a specialised Art Degree Course at university; however exceptional students can get direct entry straight from school.

Students who are looking to take up a career for which an art background is required might consider fine art, advertising, publishing, illustration, fashion, animation, architecture, theatre, film, design, photography, art gallery work or even education. The list and range of jobs really is endless.

The study of art can also help you to develop transferable skills that you can take into any job or career.

WHAT EXTRA-CURRICULAR OPPORTUNITIES ARE THERE?

Life drawing, observational drawing trips, gallery visits to Birmingham, London and Compton Verney.

The Art Department provides extra art sessions three times each week after school, every lunch time and offers a studio space for students to work in during study periods.



ART & DESIGN (TEXTILE DESIGN)

DEPARTMENTAL CONTACT: Mrs Hughes – hughes.a@myton.co.uk, Mrs Thompson thompson.e@myton.co.uk

EXAMINING BOARD AND QUALIFICATION: EDUQAS A LEVEL ART AND DESIGN

ENTRY REQUIREMENTS: Grade 6 in either GCSE Textiles, Photography or Art

WHY STUDY THIS SUBJECT?

Studying Art and Design (Textile Design) provides entry to an unprecedented range of specialisms, skills – both traditional and digital – and careers. Studying the subject can help develop:

- intellectual, imaginative, creative and intuitive capabilities
- investigative, analytical, experimental, practical, technical and expressive skills, aesthetic understanding and critical judgement
- independence of mind in developing, refining and communicating your own ideas, your own intentions and your own personal outcomes
- an interest in, enthusiasm for, and enjoyment of art, craft and design
- the experience of working with a broad range of media
- an understanding of the interrelationship between art, craft and design processes and an awareness of the contexts in which they operate

- knowledge and experience of real world contexts and, where appropriate, links to the creative industries
- knowledge and understanding of art, craft, design and media and technologies in contemporary and past societies and cultures
- an awareness of different roles, functions, audiences and consumers of art, craft and design.

WHAT SKILLS WILL I DEVELOP?

- Thinking: creativity, critical thinking, problem-solving, communication, strategy
- Working: research, collaboration, perseverance, self-direction
- Skills: practical skills, design skills, presentation skills, digital communication
- Experience: citizenship, personal care, social responsibility

WHAT ARE MY POST-18 OPTIONS?

Foundation Studies in Art & Design, degree in Art & Design, Costume Design, Interior Design, Art History, Printmaking, Fashion & Textiles, and Textiles. Working in galleries, education, film, media, theatre, the fashion industry, textile design and production.

WHAT WILL I STUDY?

Art and Design (Textile Design) encompasses a broad range of materials, techniques and processes, including a growing number of interdisciplinary approaches. These comprise of woven, embroidered, knitted, printed, painted, dyed, manipulated, embellished and constructional methods which are utilised to produce a great variety of textile outcomes that include costume and fashion design, accessories and body adornment.

Students will work on personal ideas developed from the study of artists, craft workers and designers and experiment with techniques, processes, imagery and concepts before developing larger scale pieces of textiles to realise their intentions.

Possible areas of study include:

- fashion and/or costume
- digitally or traditionally printed and/or dyed fabrics, garments and materials
- constructed textiles (knitted, woven, embellished or combined with other materials)
- textile installation
- accessories

HOW WILL I BE ASSESSED?

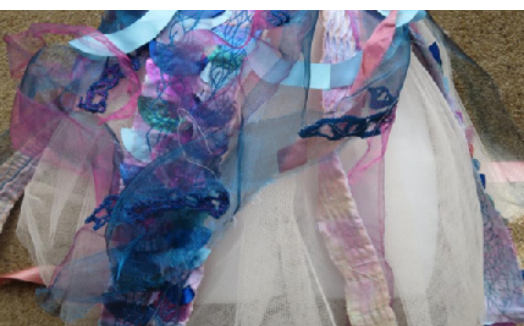
There are two components at A level:

Component 1: Personal Investigation - consists of two integrated constituent parts:

- a) A major in-depth critical, practical and theoretical investigative Textiles based project/portfolio and outcome/s based on themes and subject matter that have personal significance.
- b) An extended written element of 1000 words minimum, which may contain images and texts and must clearly relate to practical and theoretical work using an appropriate working vocabulary and specialist terminology.

Component 2: Externally Set Assignment

This component is based on preparatory study that leads to a 15 hour period of sustained focus in which you will produce a response to a chosen visual or written stimuli. As with the Personal Investigation, it is a practical project of Textiles based work produced independently.



WHAT EXTRA-CURRICULAR OPPORTUNITIES ARE THERE?

The department is open daily for students to work in during lunchtime, after school and study periods to enable the students to work independently on their projects.



BIOLOGY

DEPARTMENTAL CONTACT: Miss Harrington – harrington.d@myton.co.uk

EXAMINING BOARD AND QUALIFICATION: OCR (SPECIFICATION A) – A LEVEL

ENTRY REQUIREMENTS: At least a grade 6 in GCSE Biology or 6-6 in GCSE Combined Science and a 6 in Maths

WHY STUDY THIS SUBJECT?

“We are all part of the natural world and should learn how to look after it. But if you are cut off or divorced from the natural world, you don’t have a chance to understand how to do that.” – David Attenborough

A level Biology will give you an exciting insight into the contemporary world of biology. It covers the key concepts of biology, with practical skills integrated throughout the course. This combination of academic challenge and practical focus makes the prospect of studying A level Biology highly appealing. You will learn about the core concepts of biology and about the impact of biological research and how it links to everyday life. You will learn to apply your knowledge, investigate and solve problems in a range of contexts.

WHAT SKILLS WILL I DEVELOP?

The module – Development of Practical Skills in Biology – underpins the whole of the specification, and covers the practical skills that students should develop throughout the course. The practical skills can be assessed within written examinations and within the Practical Endorsement. The skills include:

- Use appropriate apparatus to record a range of quantitative measurements (to include mass, time, volume, temperature, length and pH).
- Use appropriate instrumentation to record quantitative measurements, such as a colorimeter or potometer.
- Use laboratory glassware apparatus for a variety of experimental techniques to include serial dilutions.
- Use a light microscope at high and low power, including use of a graticule.
- Produce scientific drawing from observation with annotations.
- Use qualitative reagents to identify biological molecules.
- Separate biological compounds using thin-layer/paper chromatography or electrophoresis.
- Safely and ethically use organisms to measure plant or animal responses and physiological functions.
- Use microbiological aseptic techniques, including the use of agar plates and broth.
- Safely use instruments for dissection of an animal or plant organ.

WHAT ARE MY POST-18 OPTIONS?

A level Biology is an excellent base for a university degree in healthcare, such as Medicine, Veterinary Science or Dentistry, as well as the biological sciences, such as Biochemistry, Molecular Biology or Forensic Science. Biology can also complement Sports Science, Psychology, Sociology and many more.

A level Biology can open up a range of career opportunities including: biological research, medical, environmental, forensics, sports and science communication. The transferable skills you will learn, such as problem solving, are also useful for many other areas, for example law.

- Use sampling techniques in fieldwork.
- Use ICT such as computer modelling, or data logger to collect data, or use software to process data.

WHAT WILL I STUDY?

Module 1 – Development of Practical Skills in Biology – the skills of planning, implementing, analysis and evaluation.

Module 2 – Foundations in Biology – includes cell structure; biological molecules; nucleotides and nucleic acids; enzymes; biological membranes; cell division, cell diversity and cellular organisation.

Module 3 – Exchange and Transport – includes exchange surfaces, transport in animals and plants.

Module 4 – Biodiversity, Evolution and Disease – includes communicable diseases, disease prevention and the immune system, biodiversity, classification and evolution.

Module 5 – Communication, Homeostasis and Energy – includes communication and homeostasis, excretion as an example of homeostatic control, neuronal communication, hormonal communication, plant and animal responses, photosynthesis, respiration.

Module 6 – Genetics, Evolution and Ecosystems – includes cellular control, patterns of inheritance, manipulating genomes, cloning and biotechnology, ecosystems, populations and sustainability.

HOW WILL I BE ASSESSED?

100% exams.

A pass/fail practical endorsement will be reported alongside your grade. This is assessed through the year by your teacher.

WHAT EXTRA-CURRICULAR OPPORTUNITIES ARE THERE?

The Science Department has close links with the Universities of Warwick and Birmingham as well as with Warwick School. There are regular Science lectures and opportunities for visits to Science Departments and Conferences.

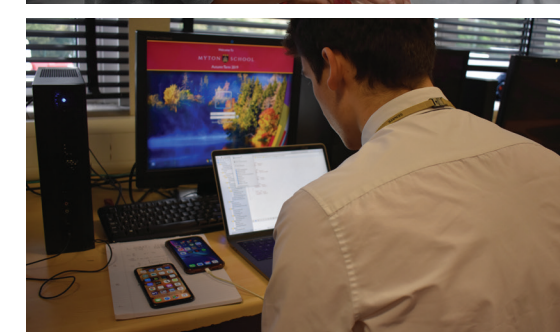
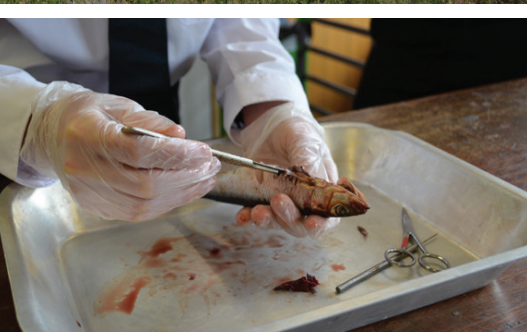
Myton’s Science Department is also developing its links with local Science, Technology, Engineering and Maths (STEM) companies.

Our Subject Ambassadors are students who have a role in promoting Biology and support and assist in the development of science skills across the school.

We run a residential weekend where students are given the opportunity to practise their sampling techniques through investigations into Psammoseral succession (study of sand dune ecology), marine zonation (involving investigations of rock pools), and river ecology.

“**Students say**

“I feel I have progressed well in Biology because my teachers have supported and encouraged me.”



BUSINESS STUDIES

DEPARTMENTAL CONTACT: Mrs Foster – foster.e@myton.co.uk

EXAMINING BOARD: AQA – A LEVEL

ENTRY REQUIREMENTS: At least a grade 5 in GCSE Maths and English.

WHY STUDY THIS SUBJECT?

Students who take Business Studies often also study Computing, Economics, Modern Languages, or Maths. But students committed to the arts or sciences should also consider taking Business Studies in this cost-centered world where most people will go on to either work for a business organisation or run their own business. All businesses (and other organisations like charities and hospitals) need sound business skills behind them.

WHAT SKILLS WILL I DEVELOP?

- How to assemble data and assess it.
- How to investigate facts and use deduction.
- How to put over your point of view fluently.
- How to work as a team to achieve results.
- This course assesses quantitative skills, making up a minimum of 10% of the overall marks. The skills tested include ratios, averages, fractions, percentages and calculation of profit and loss.

WHAT WILL I STUDY?

YEAR 12

The Year 12 course includes the following topics.

- What is business?
- Managers, leadership and decision making.
- Decision making to improve marketing performance.
- Decision making to improve operational performance.
- Decision making to improve financial performance.
- Decision making to improve human resource performance.

YEAR 13

In Year 13 we cover:

- Analysing the strategic position of a business.
- Choosing strategic direction.
- Strategic methods: how to pursue strategies.
- Managing strategic change.

HOW WILL I BE ASSESSED?

The A level is assessed by three two-hour written exams at the end of the course.

- Paper 1: Multiple-choice questions, short answer and two essays.
- Paper 2: Three compulsory data response questions.
- Paper 3: One compulsory case study consisting of six questions.

“

Students say

“Very practical and enjoyable. Teachers are passionate about the subject.”

“The lessons teach me about the wider world and are interactive.”

“When I am confused I feel comfortable to ask for help.”

“A real insight to a future in business.”

”

WHAT EXTRA-CURRICULAR OPPORTUNITIES ARE THERE?

- Lead Learner
- Enterprise and Business Courses
- Business Visits and Seminars

WHAT ARE MY POST-18 OPTIONS?

This A level will get you started in business and give you the skills and knowledge to progress to higher education. You could work for a corporation, or maybe a management consultancy.



CHEMISTRY

DEPARTMENTAL CONTACT: Mrs Ben Amor – BenAmor.K@myton.co.uk

EXAMINING BOARD AND QUALIFICATION: OCR CHEMISTRY A – A LEVEL

ENTRY REQUIREMENTS: At least a grade 6 in GCSE Chemistry or 6-6 in GCSE Combined Sciences and a 6 in Maths

WHY STUDY THIS SUBJECT?

Chemistry is everywhere in the world around you! It's in the food you eat, the clothes you wear and the water you drink. It's in medicines, the atmosphere, and cleaning agents. Chemistry connects other sciences – like Biology, Physics, Geology and Environmental Science – together. It links with many areas of everyday life and helps develop an understanding of current events and phenomena.

The course will provide a rewarding experience across the ability range, while genuinely challenging the most able students. There are many careers in chemistry, but even if you're looking for a job in another field, the analytical skills you gain in chemistry are helpful. Chemistry A level can open doors to a vast diversity of careers.

WHAT SKILLS WILL I DEVELOP?

There is a large jump between GCSE Science or Chemistry and A level. You will build on the topics you've learnt, but to a much higher level of understanding. The course requires significant additional and independent learning which will help to develop the independent learning skills you need in your further studies and in many career options.

Practical chemistry skills and scientific skills of analysis and evaluation will be integrated into the theoretical topics which will be teacher-assessed through specific practical activities designed to demonstrate students' practical competence.

The course will develop your chemical knowledge and understanding and your practical skills. It will also develop your communication skills and your ability to work as an effective member of a team.

WHAT WILL I STUDY?

Module 1 – Practical skills

- Development of practical skills
- Planning, implementing, analysis and evaluation

Module 2 – Foundations in Chemistry

- Atoms, compounds, molecules and equations
- Amount of substance
- Acid-base and redox reactions
- Electrons, bonding and structure

Module 3 – Periodic table and energy

- Periodic table and periodicity
- Group 2 and the halogens
- Qualitative analysis
- Enthalpy changes
- Reaction rates and equilibrium (qualitative)

Module 4 – Core organic chemistry

- Basic concepts
- Hydrocarbons
- Alcohols and haloalkanes
- Organic synthesis
- Analytical techniques (IR, MS)

Module 5 – Physical chemistry and transition elements

- Reaction rates and equilibrium (quantitative)
- pH and buffers
- Enthalpy, entropy and free energy
- Redox and electrode potentials
- Transition elements

Module 6 – Organic chemistry and analysis

- Aromatic compounds
- Carbonyl compounds
- Carboxylic acids and esters
- Nitrogen compounds
- Polymers
- Organic synthesis
- Chromatography and spectroscopy (NMR)

A level Practical Endorsement – Minimum of 12 practical activities.

HOW WILL I BE ASSESSED?

1. Examination paper (01) 37% – Periodic table, elements and physical chemistry – 100 marks
2. 2 hour 15-minute written paper
3. Examination paper (02) 37% – Synthesis and analytical techniques – 100 marks
4. 2 hour 15-minute written paper
5. Examination paper (03) 26% – Unified chemistry – 70 marks
6. 1 hour 30-minute written paper
7. Practical endorsement in chemistry (04) – non-exam assessment

“

Students say

“Chemistry is a highly challenging course, but probably the most stimulating academic school subject you will ever take part in. I really enjoyed studying the course and found that it develops your independent learning and time management skills which will be beneficial in later life. There are lots of exciting practicals to complete every week and you will never find yourself sitting there with nothing to do.”

”

WHAT ARE MY POST-18 OPTIONS?

Chemistry A level is particularly suitable preparation for higher education courses in Pure Sciences, Applied and Vocational Sciences, Chemistry, Biological Sciences, Applied Chemistry, Biochemistry, Cell Biology, Medicine, Veterinary Science, Microbiology, Food Biology, Dentistry and Psychology.

The analytical and applied nature of the course also prepares students for a wide variety of non-scientific courses such as Law, Accountancy, Management and Finance.



WHAT EXTRA-CURRICULAR OPPORTUNITIES ARE THERE?

Students have the opportunity to take part in the Royal Society of Chemistry Olympiad. Let us know if you would like to take part!

CHILDREN'S PLAY, LEARNING AND DEVELOPMENT

DEPARTMENTAL CONTACT: Mrs Phillips – phillips.j@myton.co.uk
EXAMINING BOARD AND QUALIFICATION: PEARSON LEVEL 3
ENTRY REQUIREMENTS: At least a grade 4 in GCSE English

WHY STUDY THIS SUBJECT?

This is a course that is suitable for anyone who is interested in studying the skills and acquiring the knowledge involved in the care of young children and babies.

This Award is suitable for students considering careers that require knowledge of child development. It will give a sound understanding to enable you to work towards a career in nursery and primary teaching, social work, paediatric nursing, midwifery and other similar roles.

WHAT SKILLS WILL I DEVELOP?

You will develop key skills in communication, team work, analytical writing, independent thinking, enquiring and reflecting. Through this you will gain the ability to apply knowledge and personal organisational skills in many contexts. The skills you will gain are useful and transferable whatever work you go on to do.

WHAT WILL I STUDY?

- Children's Development
- Development of Children's Communication, Literacy and Numeracy Skills
- Play and Learning
- Keeping Children Safe

WHAT ARE MY POST-18 OPTIONS?

UCAS points gained from this qualification can be used to meet the entry requirements for many courses in higher education or alternatively you may choose to study further childcare qualifications whilst working in the sector. Because the course was designed in collaboration with industry professionals, it is a respected subject for those wishing to move into employment in the sector following further study.

HOW WILL I BE ASSESSED?

There will be one unit that is assessed by an exam. The rest of the units will be course work that is both internally and externally assessed.

WHAT EXTRA-CURRICULAR OPPORTUNITIES ARE THERE?

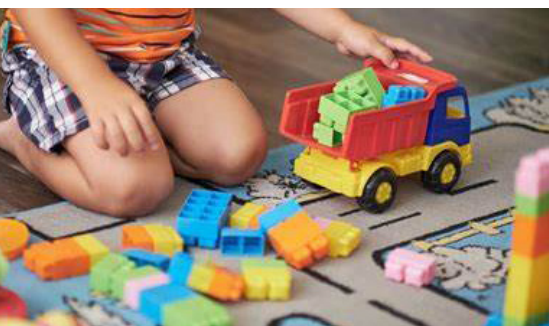
You will need to gain some practical experience working with younger children through an organised work placement at a local nursery or primary school. You may also like to add to this formal placement by buddying or volunteering at extra-curricular activities for younger students at school or local groups.

“

Students say

“Learning about the way we develop and how the things that happen in our lives affect our development is really fascinating.”

”



COMPUTER SCIENCE

DEPARTMENTAL CONTACT: Mr Johnson – johnson.s@myton.co.uk

EXAMINING BOARD AND QUALIFICATION: OCR – A LEVEL

ENTRY REQUIREMENTS: At least a grade 6 in GCSE Computer Science and a 5 in Maths

WHY STUDY THIS SUBJECT?

The course gives students an in-depth understanding of how computer technology works. Although students will have used the technology before, this course gives them an insight into what goes on 'behind the scenes', including computer programming, which many students find absorbing.

Nationally there is a growing demand for professionals who are qualified in this area. Students who take this subject at A level will open up a number of fascinating and very well paid careers.

WHAT SKILLS WILL I DEVELOP?

The focus will be on programming with an emphasis on the importance of computational thinking as a discipline. Students will also apply Maths to understand computing logic. They will develop the skills to solve problems, design systems and understand human and machine intelligence. They will also apply academic principles to real world systems.

The course will develop critical thinking, analysis and problem-solving skills through the study of computer programming. These skills can then be transferred to other subjects.

WHAT WILL I STUDY?

COMPUTER SYSTEMS

Component 01 – Computer systems – this component will introduce you to the internal workings of the Central Processing Unit (CPU), the exchanging of data, and also looks at software development, data types and legal and ethical issues.

- The characteristics of contemporary processors, input, output and storage devices
- Software and software development
- Exchanging data (how data is exchanged between different systems)
- Data types, data structures and algorithms
- Legal, moral, cultural and ethical issues

Component 02 – Content of Algorithms and programming – you will understand what is meant by computational thinking, and understand the benefits of applying computational thinking to solving a wide variety of problems.

- Elements of computational thinking
- Problem solving and programming

- Algorithms
- **Component 03** – Programming project – you will analyse, design, develop, test, evaluate and document a program written in a suitable programming language for real users.

ALGORITHMS AND PROBLEM SOLVING

How to design, build and test computer programs.

HOW WILL I BE ASSESSED?

20% Coursework versus 80% exams.

This is a two-year, linear course; the exams will take place at the end of the course.

Examination – two exams, each of 2 hours 30 mins (80%) – components 1 and 2.

Coursework – system development project (20%) – component 3.

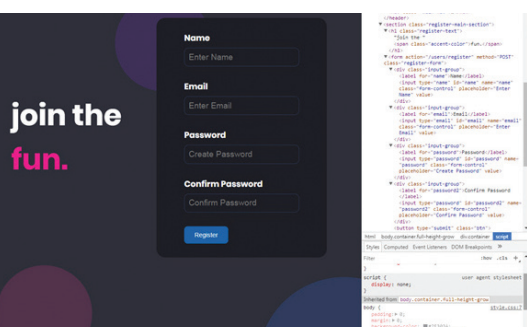
“

Students say

“Really fascinating to know how computers actually work.”

“The course is technical but if you think logically you can work it all out.”

”



WHAT ARE MY POST-18 OPTIONS?

There is clear progression from A level Computer Science into higher education Computer Science or IT courses. While some courses don't have it as a requirement, it is still a good course to take if you plan on studying Computer Science at University, as it will ensure you have the programming and computational thinking skills to understand and internalise the courses you may take.

This course is highly suitable for a range of computing-focused fields, such as software development, digital forensics, artificial intelligence, business and more. We have had students take up roles like these with top IT companies such as IBM, or even invent new software and make a start-up!

WHAT EXTRA-CURRICULAR OPPORTUNITIES ARE THERE?

Students will be introduced to a wide array of software and websites, which are aimed at showing students just how many unique applications for programming there are.

Students will be given the opportunity to take part in lessons and after school activities and help mentor keen younger students with their programming.

Students may also be given a chance to visit Disneyland Paris, so they can see how computer systems are used to provide entertainment and support the day-to-day running of the park.

Students will have the opportunity to volunteer at the Computing Department's Gaming and Coding Club with our local primary schools.



CREATIVE DIGITAL MEDIA PRODUCTION (DIGITAL GAMES PRODUCTION)

DEPARTMENTAL CONTACT: Mr Johnson – johnson.s@myton.co.uk
EXAMINING BOARD AND QUALIFICATION: PEARSON – BTEC LEVEL 3
ENTRY REQUIREMENTS: At least a grade 4 in GCSE English and a genuine interest in the gaming industry

WHY STUDY THIS SUBJECT?

This course is intended as a Tech Level qualification and equivalent to one A level. The course provides preparation for entry level roles in the industry, and work briefs are adapted from real world scenarios.

It is great preparation for students who are seriously considering an apprenticeship in the creative and design industries, particularly in the gaming industry.

The course gives you the chance to develop a real understanding of the gaming industry and the contemporary gaming landscape and the hugely influential and growing role and importance to the UK economy of gaming. It helps if you have an interest in the world of gaming, an open and inquisitive mind, creative tendencies and ambition.

Please do not choose this course if you think it's an easy option or that you will just play games all day!

WHAT SKILLS WILL I DEVELOP?

You will develop the practical, interpersonal and thinking skills required to be able to succeed in employment and higher education.

The course introduces you to media ideas and the practice of production. You will develop your skills in:

- Creative and problem solving skills as well as critical thinking. You will develop a non-routine approach to problem solving.
- Intrapersonal skills such as communication, teamwork, negotiating, influencing and presenting.
- Interpersonal skills such as self-management, adaptability, resilience, self-awareness and development.

WHAT WILL I STUDY?

There are two mandatory units:

- Digital Media Skills (studying and practicing creating games to a client's specifications)
- Digital Games Production (studying the different type of game genres, and how to create games of these genres)

and three optional units, which are likely to be:

- Game Engine Scripting (using the Godot game engine to script imaginative games)
- 3D Modelling (using Blender to model and texture 3D props for games)
- 3D Environment Design (using Blender and Godot to take 3D props and create an immersive, 3D game world)

HOW WILL I BE ASSESSED?

Except for Digital Media Skills, all units are assessed with two coursework tasks, a video or presentation about the unit content and a planned game or showcase, both meeting a brief.

Digital Media Skills is assessed with a 20-hour assessment, completed over a week, where students will be given a brief and have to create assets and a game to meet that brief. This will be taken during Spring Term in Year 13.

“ Mr Lowe says
“This is an exciting new choice for Myton students. It's a vocational, lively and practical study of a rapidly growing and exciting industry. Students will get the chance to develop practical solutions to real gaming world scenarios and develop a wide range of skills. There will be opportunities for employer involvement from the thriving local computer game industry.”



WHAT ARE MY POST-18 OPTIONS?

This subject will give you an insight into the kinds of careers that exist in the gaming industry. It may give you the inspiration to go on to study further or seek an apprenticeship in the industry.

It will also help you develop the skills required for many degree courses.

WHAT EXTRA-CURRICULAR OPPORTUNITIES ARE THERE?

Visits to local gaming companies such as Unit 2 games, opportunities for ambassadors to create games, develop awareness of the course and cultivate links with the industry. Students will have the opportunity to volunteer at the Computing Department's Gaming and Coding Club with our local primary schools.



CRIMINOLOGY

DEPARTMENTAL CONTACT: Mrs Walkden – walkden.k@myton.co.uk

EXAMINING BOARD AND QUALIFICATION: WJEC (EDUQAS) – LEVEL 3 APPLIED DIPLOMA

ENTRY REQUIREMENTS: At least a grade 4 in GCSE English Language

WHY STUDY THIS SUBJECT?

Criminology is a new and exciting course that not only looks at patterns and trends within criminal behaviour but also analyses how individuals are punished through the criminal justice system. If you love your crime documentaries and are interested in what motivates individuals to commit crimes, then this is the course for you.

The popularity of this course is growing rapidly nationally and students are combining it with a wide range of A level subjects. For example, it could be taken in combination with other Social Science subjects such as Sociology, Psychology, Politics, Economics, Business or it might be an attractive option for students focusing on 2 or 3 Science subjects such as Biology, Chemistry or Physics. It could equally fit nicely with Applied Science or other BTEC options.

WHAT SKILLS WILL I DEVELOP?

Criminology is the study of the reasons why individuals commit crime. By understanding why a person commits a crime, we can develop ways to control crime or rehabilitate the criminal. This course will enable you to use theories of criminality to analyse criminal situations

and suggest ways of reducing crime. You will also develop the knowledge and skills to research policy in practice, assess campaigns for changes in awareness and examine information to review verdicts in criminal cases.

WHAT WILL I STUDY?

YEAR 12

Unit 1 – Changing Awareness of Crime

You will explore how crime reporting affects the public perception of crime and criminals. You will then go on to study how campaigns are used to bring about change and plan a campaign of your own.

Unit 2 – Criminological Theories

You will discover and assess all the theories that have been put forward to explain why crime occurs.

“

Some people grow up to become serial killers.

Some grow up to catch them.

– Aaron Hotchner, Criminal Minds

”

YEAR 13

Unit 3 – Crime Scene to Courtroom

You will gain an understanding of the process of criminal investigations. You will then go on to learn about the prosecution of suspects and be able to review criminal cases.

Unit 4 – Crime and Punishment

You will study every aspect of the criminal justice system and the types and purposes of punishment in England and Wales.

HOW WILL I BE ASSESSED?

The course is divided into 4 units and therefore it is a modular structure. You will be assessed at the end of every unit. There are opportunities for assessment in January and June of each year.

Units 1 and 3 are internally assessed by your teachers in examination conditions on computers. Units 2 and 4 are examined through a 90-minute external written paper.

Units 1 and 2 lead to a Level 3 Certificate in Criminology, worth 50% of the final Level 3 Diploma.

Successful completion of the 4 units, over the 2 years, leads to the Level 3 Diploma, which is equivalent to an A level and carries the same UCAS points.



WHAT ARE MY POST-18 OPTIONS?

This course is ideal for anyone who wishes to pursue a career in Criminology. This course can provide a route into higher education to study at degree level in a variety of areas such as Criminology, Criminal Justice, Psychology and Forensic Science.

The course would also provide an excellent basis to anyone wishing to pursue a career within Social Work, Mental Health, the Police Force, Customs and Immigration, Prison Services, Court Services, Security Services, the NHS, Education and Youth and Community Services.

WHAT EXTRA-CURRICULAR OPPORTUNITIES ARE THERE?

Visit to court rooms to see the criminal justice system in action, subject seminars hosted by the exam boards and we will be hearing from guest speakers from the police to the prison service in order to get first-hand experience of what criminology is.



DANCE

DEPARTMENTAL CONTACT: Mrs Stringer – stringer.c@myton.co.uk

EXAMINING BOARD AND QUALIFICATION: PEARSON – BTEC LEVEL 3 EXTENDED CERTIFICATE

ENTRY REQUIREMENTS: At least a grade 5 in GCSE English and practical dance experience

WHY STUDY THIS SUBJECT?

This course offers a vocational experience for enthusiastic dancers. The subject encourages creativity, team work and communication skills.

WHAT SKILLS WILL I DEVELOP?

There will be opportunity to develop practical, appreciation and analytical skills. You will study, ballet, contemporary and street dance as optional units and also study a practitioner. We will have a performance study unit as a mandatory unit.

WHAT WILL I STUDY?

YEAR 12

Unit 1 – Investigating practitioners work

Unit 2 – Developing skills and techniques for live performance

Unit 8 – Classical ballet technique

Unit 11 – Street dance

Unit 12 – Contemporary dance technique

WHAT SKILLS WILL I DEVELOP?

Five units, of which two are mandatory and one external. Mandatory content (50%). External assessment (33%).

WHAT ARE MY POST-18 OPTIONS?

BTEC is an acceptable qualification for entry into many university courses, particularly if combined with other A level courses.

This practical course is an ideal preparation for further study or a career in the performing arts; including those wishing to pursue dance, musical theatre or performing.

WHAT EXTRA-CURRICULAR OPPORTUNITIES ARE THERE?

All extra-curricular activities are open to everyone at Myton.

There is an opportunity to form a Sixth Form dance group with associated performance opportunities.

Sixth Form performance evenings and showcases.



DRAMA AND THEATRE STUDIES

DEPARTMENTAL CONTACT: Miss Arliss – arliss.a@myton.co.uk

EXAMINING BOARD AND QUALIFICATION: EDEXCEL – A LEVEL

ENTRY REQUIREMENTS: At least a grade 5 in GCSE Drama and a 5 in English

WHY STUDY THIS SUBJECT?

The course is a highly regarded qualification that offers a balance between the academic study of performance texts and the opportunity to present creative responses to a range of different plays for an audience. The course allows for a deeper exploration of how social, cultural, political and historical context shapes theatre whilst allowing for hands-on experience with all that theatre has to offer. The course is supported with the continued opportunity to be involved in extra-curricular projects with our ever-expanding after-school programme.

WHAT SKILLS WILL I DEVELOP?

We will look at a devised unit, a monologue/duologue performance, a group performance, textual analysis of two different plays and a final written exam. The course will allow you to grow as a performer, theatre maker and spectator and consider the decisions made by actors, directors and playwrights. Students will be given the opportunity and tools to learn how lights and sound can be used to shape a performance whilst having hands-on experience with other design elements needed in a professional setting.

WHAT WILL I STUDY?

Performance text:
Equus – Peter Shaffer

Lysistrata – Aristophanes

Monsters – Niklas Radstrom

Performance opportunities (subject to change and tailored to you):

- *Pool (No Water)* – Mark Ravenhill
- *Spring Awakening* – Anya Reiss
- *Attempts on her Life* – Martin Crimp
- *Swallow* – Stef Smith
- *Revolt. She Said. Revolt Again.* – Alice Birch
- *The Pillow Man* – Martin McDonagh

HOW WILL I BE ASSESSED?

Component 1

Devising (Component Code: 9DR0/01), Performance and SWED document, 40% of the qualification (80 marks)

Component 2

Text in Performance (Component Code: 9DR0/02), Group piece plus a monologue or duologue, 20% of the qualification (60 marks)

Component 3

Theatre Makers in Practice (Paper Code: 9DR0/03), Written examination: 2 hours 30 minutes, 40% of the qualification (80 marks)

“

Students say

“The course has allowed me to grow as an analytical and creative person.”

“I have really enjoyed working closely with students and teachers to create some outstanding work.”

“I feel so much more confident about expressing myself in all aspects of my life.”

”

WHAT ARE MY POST-18 OPTIONS?

Drama and Theatre Studies is a highly acceptable course for university courses and is desired by Drama Schools.

WHAT EXTRA-CURRICULAR OPPORTUNITIES ARE THERE?

All extra-curricular activities are open to everyone at Myton.

There is an opportunity to form a Sixth Form drama group with associated performance opportunities.

Sixth Form performance evenings and showcases.

ECONOMICS

DEPARTMENTAL CONTACT: Mrs Foster – foster.e@myton.co.uk

EXAMINING BOARD AND QUALIFICATION: AQA – A LEVEL

ENTRY REQUIREMENTS: At least a grade 5 in Maths plus a grade 6 in GCSE English.

WHY STUDY THIS SUBJECT?

Students who take Economics often also study Business, Mathematics, Geography, History, Politics, Philosophy and Languages.

Of course an A level in Economics will help you to get into university or college. Economics is a versatile subject that can help you in a number of careers. Not only could you find yourself working for big corporations, banks or the government but your qualification in economics could also be valuable support in a career like marketing, law, journalism or teaching.

WHAT SKILLS WILL I DEVELOP?

Economics helps develop a number of personal skills:

- Research, analysis and evaluation
- Communication
- Working with others to discuss economic issues and solve economic problems

WHAT WILL I STUDY?

YEAR 12

In Year 12 you'll focus on both Microeconomics and Macroeconomics.

The operation of markets

- The economic problem and economic methodology
- Price determination in a competitive market
- Production, costs and revenue
- Competitive and concentrated markets
- The market mechanism, market failure and government intervention in markets

The national economy in a global context

- Measurement of macroeconomic performance
- How the macro economy works: the circular flow of income, AD/AS analysis and related concepts
- Economic performance
- Macroeconomic policy

“Students say

“I love how the subject applies to real life.”

“It has real life application. You learn about current events and things on the news.”

“Gives you an insight into the real world that other subjects do not.”

“Helps you understand why governments, people and business act the way they do.”

YEAR 13

Building on the topics covered in the first year, students study:

Individuals, firms, markets and market failure

- Individual economic decision making
- Production costs and revenue
- Perfect competition, imperfectly competitive markets and monopoly
- The labour market
- The distribution of income and wealth: poverty and inequality
- The market mechanism, market failure and government intervention in markets

The national and international economy

- The measurement of macroeconomic performance
- How the macroeconomy works: the circular flow of income, AD/AS analysis and related concepts
- Economic performance
- Financial markets and monetary policy
- Fiscal policy and supply-side policies
- The international economy

HOW WILL I BE ASSESSED?

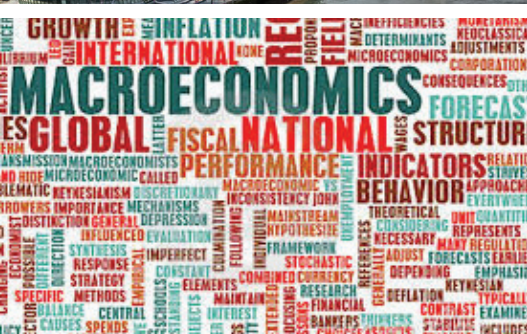
3 exams of 2 hours each in June of Year 13

WHAT ARE MY POST-18 OPTIONS?

This A level will get you started in business and give you the skills and knowledge to progress to higher education. You could work for a corporation, or maybe a management consultancy.

WHAT EXTRA-CURRICULAR OPPORTUNITIES ARE THERE?

- Lead Learner
- Enterprise and Business Courses
- Business Visits and Seminars



ENGLISH LANGUAGE

DEPARTMENTAL CONTACT: Ms Tully – tully.e@myton.co.uk

EXAMINING BOARD AND QUALIFICATION: AQA – A LEVEL

ENTRY REQUIREMENTS: At least a grade 6 in both GCSE English Language and Literature

WHY STUDY THIS SUBJECT?

Language is all around us, from the social media that many of us interact with every day, to the laws that govern modern British society. Linguistics is the scientific study of language that seeks to understand the ever-developing world of words that we live in.

This two-year English Language course is an excellent foundation in the analysis of language. It provides you with skills needed in all walks of life and builds on ideas and skills you started developing at GCSE English Language, though it is very different from the GCSE course.

Have you ever wondered where new words come from? Why young people seem to develop their own style of language? How children learn to speak, despite not having a teacher? If men and women speak differently? These are just some of the questions that you will face over the two-year English Language A level.

If you have a curious mind and want to think more about the society we live in and the language that we use, this could be the course for you!

WHAT SKILLS WILL I DEVELOP?

During the course you will understand how language is used by different people within society. You'll explore how language has evolved and changed; the influence of technology and the media; how we acquire language and learn to read and write and how accent and dialect, gender and power all influence the language we use.

You will hone your writing skills, developing your analytical writing as this is very much an essay-based subject. You will be able to read, analyse and evaluate a diverse range of non-fiction texts and be able to write successfully for differing audiences and purposes. You'll also develop your skills in using and understanding grammar.

WHAT WILL I STUDY?

Paper 1 Language, the Individual and Society

Written Exam

Section A: Textual Varieties and Representation: you will look at how a variety of frameworks inform the way that texts are produced and received.

Section B: Children's Language Development: you will write a discursive essay on how children acquire language.

Paper 2 Language Diversity and Change

Written Exam

Section A: Diversity and Change: you will write an evaluative essay on Language Diversity or Change.

Section B: Language Discourses: You will answer a question requiring analysis of how texts use language to present ideas, attitudes and opinions. You will also produce a directed writing task on attitudes to language linked to topics/ideas around Language Diversity and Change.

Language in Action (Coursework)

Non-Exam Assessment

You will produce a Language Investigation on a topic of language that you find most interesting. You will plan and carry out your own research into the world of language.

You also get the opportunity to write creatively and will produce a piece of original writing with an accompanying commentary.

HOW WILL I BE ASSESSED?

Paper 1 and Paper 2 together are worth 80%.

The Non Exam Assessment is worth 20%.

“

Students say

“Studying the way people speak is fascinating and you get to work very independently. It's by far one of the best subjects I have chosen.”

“This course is so different from GCSE English Language! It really challenges you to think about the real world.”

”



WHAT ARE MY POST-18 OPTIONS?

All universities will value this A level and the careers it will help you into are endless; essentially any career or course that values literacy as a skill. Specifically, some examples might be: Law, Journalism, Broadcasting, Teaching, Politics and Business. The course also crosses over with subjects like Sociology and Psychology.

WHAT EXTRA-CURRICULAR OPPORTUNITIES ARE THERE?

We offer trips and study days to support learning during the course. Previous visits have included a trip to the British Library, a visit to Warwick Records Office and attending lectures by the well-known linguist David Crystal.



ENGLISH LITERATURE

DEPARTMENTAL CONTACT: Ms Tully – tully.e@myton.co.uk

EXAMINING BOARD AND QUALIFICATION: OCR – A LEVEL

ENTRY REQUIREMENTS: At least a grade 6 in both GCSE English Language and Literature

WHY STUDY THIS SUBJECT?

English Literature is a two-year course for those who love reading and enjoy immersing themselves in poetry and drama as well as the novel. Reading for pleasure is a key characteristic of a successful Literature student.

You will engage with a variety of texts ranging from Chaucer to contemporary post-1990 fiction and be encouraged to share your opinions and make informed judgements about those texts. Literature can be taken as a stand-alone course or as a complement to other arts-based subjects.

WHAT SKILLS WILL I DEVELOP?

In English Literature you will be encouraged to develop your skills of analysis and interpretation as well as your understanding and appreciation of a variety of literary genres. You explore the context behind a text's production and consider the contexts in which it is received. You will be introduced to key literary terms which you will use in written work to express your views and show your understanding.

You will develop your ability to present a well-structured, clearly written discursive argument as this is very much an essay-based subject. You will also be encouraged to discuss your views with your peers in class.

WHAT WILL I STUDY?

Component 1 Shakespeare, Drama and Poetry pre-1900

Written Exam

Texts could include a range from Christopher Marlowe to Oscar Wilde and Geoffrey Chaucer to Christina Rossetti.

Component 2 Comparative and Contextual Study

Written Exam including close reading

Themes include: American Literature 1880–1940; The Gothic; Dystopia; Women in Literature and The Immigrant Experience.

“

Students say

“You never truly appreciate the beauty of a novel until you see it from a range of perspectives. The course allows both a creative and an academic freedom. I can't recommend it enough to anyone who not only loves reading, but also to those who are excited to embrace Literature and the written word from a variety of perspectives.”

”

Component 3 Literature post-1900

Non-examined assessment

Study of 3 texts: Poetry, prose and drama all published post 1900. 1 text must have been published post 2000.

- Task 1: Close reading or re-creative writing with commentary
- Task 2: Comparative essay

HOW WILL I BE ASSESSED?

Component 1 and 2 together are worth 80%

Component 3, the Non-Exam Assessment is worth 20%

WHAT ARE MY POST-18 OPTIONS?

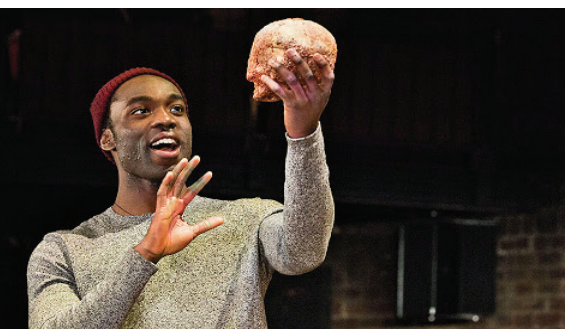
You will leave the course with the ability to confidently present your independent views in written and spoken forms.

As one of the key skills taught in Literature is developing and presenting a coherent argument, the subject leads naturally into a wide variety of post-18 options. In the past candidates have gone on to study a very broad range of subjects at university, including Law, Chemistry, and History as well as Literature, Creative Writing and Journalism.

WHAT EXTRA-CURRICULAR OPPORTUNITIES ARE THERE?

In English Literature you may attend study days related to your texts as well as relevant theatre productions.

Recently, for example, students attended lecture days in Birmingham on *The Handmaid's Tale* and *A Streetcar Named Desire*. Theatre trips have included *Hamlet* and Oscar Wilde's *An Ideal Husband*.



ENVIRONMENTAL SCIENCE

DEPARTMENTAL CONTACT: Mrs Stephenson – stephenson.l@myton.co.uk

EXAMINING BOARD AND QUALIFICATION: AQA – A LEVEL

ENTRY REQUIREMENTS: Either grade 5-5 at GCSE Combined Science or 2 separate sciences at grade 5 plus (preferably) GCSE Geography and Maths level 5

WHY STUDY THIS SUBJECT?

Are you passionate about the environment? Would you like to make a difference and be a decision maker of the future?

The environment belongs to all living beings and is therefore important for us all. Everyone, no matter what their occupation, is affected by environmental issues such as global warming, depletion of the ozone layer, dwindling forests, finite energy resources, and loss of global biodiversity.

The job outlook for environmental scientists is excellent. Employment is projected to grow 15% from 2012 to 2022, which is faster than the average for all occupations. Issues like climate change, HS2, forest fires and fracking have spurred more public interest in the environment. These are the jobs of the future and this course will give you the skill set and understanding to access these areas.

WHAT SKILLS WILL I DEVELOP?

This is a great accompaniment to A levels in Geography, Biology, Physics and Maths. You will develop key skills including communication, teamwork and critical thinking.

At the end of each subject content section, there are details of opportunities for you to develop scientific skills within the context of that topic.

These include:

- Skills related to the methodologies and sampling techniques that you must gain through first-hand experience
- Skills related to research methods that can be gained through class-based and/or practical activities

WHAT WILL I STUDY?

A level Environmental Science is a 2-year course run by AQA and offers the chance to study key topics including biophysical environment, energy resources, pollution, circular economy and sustainability.

The course provides ample opportunities to look at real-life case studies. This contemporary qualification has never been more relevant.

Subject content:

1. The living environment
2. The physical environment
3. Energy resources
4. Pollution
5. Biological resources
6. Sustainability
7. Research methods

HOW WILL I BE ASSESSED?

After the 2 years of study, you will sit just 2 x 3-hour examinations, each examination weighing 50% of the grade and is a combination of multiple choice, short answer, and extended writing questions.

“

Mr Hobbs and Mrs Stephenson (and Sir David Attenborough) say

“After listening to feedback from current and former students, we want to offer the opportunity to study an A level subject which addresses the environmental issues facing the world today and which will equip you with the necessary skills and understanding to make a change.”

“The Holocene has ended. The Garden of Eden is no more. We have changed the world so much that scientists say we are in a new geological age: the Anthropocene, the age of humans.” – Sir David Attenborough

”



WHAT ARE MY POST-18 OPTIONS?

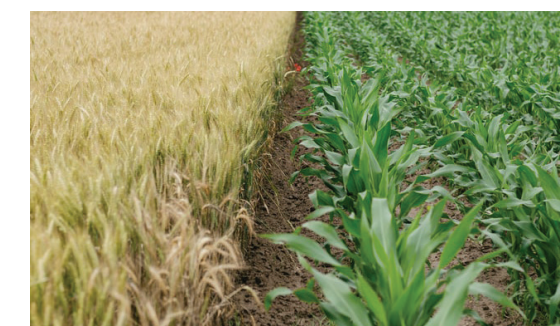
Environmental Science A level will equip you with the skills, information and understanding needed for the jobs of the future and can lead to higher education courses such as:

- Environmental Science
- Meteorology and Oceanography
- Environmental Science with Hazards and Disasters
- Geography and Environmental Hazards
- Environmental Science with Business Management
- Ecology and Conservation

As well as other Biology and Geography-related courses.

WHAT EXTRA-CURRICULAR OPPORTUNITIES ARE THERE?

You will get the chance to do fieldwork and we're also planning residential trip halfway through the course.



FILM STUDIES

DEPARTMENTAL CONTACT: Mr Lowe – lowe.j@myton.co.uk

EXAMINING BOARD AND QUALIFICATION: EDUQAS – A LEVEL

ENTRY REQUIREMENTS: At least a grade 5 in English plus able to demonstrate a genuine interest in the film industry or film production

WHY STUDY THIS SUBJECT?

Choose this course if you are seriously interested in film. If you perhaps already make films of any kind, then this is the course for you. If you are enthusiastic, curious and creative then this is the course for you.

If you think it will be easy and that we will just sit around watching old films all day, then you are seriously mistaken and should find alternative courses. If you are genuinely interested in a potential career in this industry and can demonstrate real enthusiasm for film, then you will be a natural.

WHAT SKILLS WILL I DEVELOP?

- Analysis and theoretical interpretations
- Creativity and technological skills
- Research and collaboration skills

“

Mr Lowe says:

“Film is the main cultural innovation and major art form of the last century. It is a hugely culturally significant industry that is constantly evolving and growing.”

Previous Film Studies students of mine have achieved outstanding results, won national prizes, studied film at university and now work in the industry.”

”

WHAT WILL I STUDY?

You will:

- Study ways to ‘read’ a film and ways in which spectators respond to film
- Explore a diverse range of film and its social, cultural, political, historical and technological contexts
- Look at films’ significance in national and global contexts
- Apply critical approaches to film
- Apply knowledge and understanding of film through filmmaking

HOW WILL I BE ASSESSED?

Two exams:

Component 1 (35%): American film since 1960s

Component 2 (35%): European film

And a non-exam assessment (30%): Film production



WHAT ARE MY POST-18 OPTIONS?

Film/TV/Media courses at university as well as Film/TV/Media apprenticeships.

WHAT EXTRA-CURRICULAR OPPORTUNITIES ARE THERE?

At least one trip to a film production studio, visits to local places of film interest, film screenings as well as many opportunities to be film ambassadors, shoot and edit a range of films for many different purposes.



GEOGRAPHY

DEPARTMENTAL CONTACT: Mrs Wood – wood.e@myton.co.uk

EXAMINING BOARD AND QUALIFICATION: OCR – A LEVEL

ENTRY REQUIREMENTS: At least a grade 6 in GCSE Geography and grade 5 in Maths and English

WHY STUDY THIS SUBJECT?

Geography at A level is very broad. It will suit students interested in Science, Maths, Sociology, Politics and those with a love for the outdoors and the environment.

From the BBC's Simon Reeve, "Geography is the way ahead – the story of us and our planet."

WHAT SKILLS WILL I DEVELOP?

Geography is widely regarded as one of the most valuable subject areas. It ranks in the top 10 of most valuable degree subjects due to the huge range of skills utilised within it.

We will provide you with support as we go from literacy and communication skills, to fieldwork skills and report writing. You will also tackle scientific and mathematical skills along with developing the skills of using data, independence and teamwork, analysis and interpretation.

You will become a well-rounded individual through studying Geography.

WHAT WILL I STUDY?

At A level we cover a huge number of topics.

Year 12 focuses on Changing Places, Making Spaces, Power and Borders, Migration, Earth's Life Support Systems and Coasts. Students get to explore and apply their learning through various field trips. Starting with looking at a very new idea of why places develop, where we visit Sheffield in the autumn term of Year 12 to explore various parts to understand how the identity and character of the city has changed through time. Throughout the year students will be involved in visiting local areas to apply their learning on water and carbon cycles, as well as refining their data collection skills in preparation for their NEA.

HOW WILL I BE ASSESSED?

Our second field trip in the summer of Year 12 is for you to collect the data for your independent investigation, where you get to choose the topic and title you focus on. This makes up 20% of your A level, the remaining 80% is split between three exams at the end of Year 13.

“ Students say

“I have enjoyed the course and have been very well supported by the staff in order to make the most of my ability.”



WHAT ARE MY POST-18 OPTIONS?

Geography is one of the most transferable options for A level, the vast array of skills we use will give you many options. At university common degree paths are Geography, Physical Geography, Human Geography, Geology, Environmental Science and Meteorology.

Beyond that the job opportunities for someone with a background in Geography are immense.

WHAT EXTRA-CURRICULAR OPPORTUNITIES ARE THERE?

There will be opportunities to attend seminars at external schools to build your knowledge and give you university-style experiences. As a Geography ambassador you will be able to use your Geography skills to support lower years during lessons and at other extra-curricular events, an excellent addition to any CV.

HEALTH AND SOCIAL CARE

DEPARTMENTAL CONTACT: Mrs Tonry – tonry.e@myton.co.uk

EXAMINING BOARD AND QUALIFICATION: PEARSON LEVEL 3

ENTRY REQUIREMENTS: At least a grade 4 in GCSE English. You do not have to have studied Health and Social Care previously although this is an advantage. If you have studied it at Level 2 you should have achieved a merit or above at this level

WHY STUDY THIS SUBJECT?

It is a varied and interesting course which allows you to explore and learn about Health and Social Care and the principles that underpin effective care in our society. You will build up a variety of skills and technical knowledge. It gives you the opportunity to develop a broad base of understanding of the Health and Social Care sector.

If completed successfully, the course will give you an A level equivalent qualification which can count as UCAS points towards entry for higher education or you may choose to go into relevant care services in the Health and Social Care sector and gain further qualifications there.

WHAT SKILLS WILL I DEVELOP?

You will be encouraged to develop a range of skills and a social awareness that is so important in the Health and Social Care sector. Significant key skills you will be encouraged to develop are effective communication, working as part of a group, being an independent learner, leadership, research skills, and the ability to

disseminate information.

WHAT WILL I STUDY?

You will study a range of topics over the two years including:

- Human Lifespan Development
- Working in Health and Social Care
- Meeting Individual Care and Support Needs
- Psychological Perspectives

HOW WILL I BE ASSESSED?

Assessment will be through a combination of examination and internally and externally assessed coursework.

WHAT ARE MY POST-18 OPTIONS?

As A level 3 subject, successful completion of the qualification will give you UCAS points for entry into higher education or you may choose to study further Health and Social Care qualifications whilst working in the sector.

WHAT EXTRA-CURRICULAR OPPORTUNITIES ARE THERE?

You will be encouraged to complete some work experience and visit relevant Health and Social Care settings. You may also like to volunteer to mentor and buddy younger students to develop your skills in communication and empathy.



Students say

“I have enjoyed learning about the importance of communication in Health and Social Care. It has really made me think about the value of effective communication and helped me to pick up on other people's non-verbal messages.”



HISTORY

DEPARTMENTAL CONTACT: Mrs Woodward– woodward.n@myton.co.uk

EXAMINING BOARD AND QUALIFICATION: AQA – A LEVEL

ENTRY REQUIREMENTS: At least a grade 5 in GCSE History or a 5 in English (if not taking GCSE History)

WHY STUDY THIS SUBJECT?

A level History is a lively course which gives students a broad understanding of key historical themes. The units chosen offer the opportunity to study political, social, economic and religious history through important periods in three different countries.

The course also allows students to study the impact of individuals of enormous historical significance including Lenin, Stalin, Martin Luther King and the Tudor Dynasty, from Henry VII to Elizabeth I.

WHAT SKILLS WILL I DEVELOP?

The study of history involves many skills which are of use both within and beyond the boundaries of the subject. Developing effective research skills is an essential aspect of history but these skills are also required in many other subjects and professions.

The ability to analyse and evaluate evidence will also be central to success in this course, as well as being an important life skill. Students of History also become familiar with appraising and building arguments.

In addition to this the successful communication of their conclusions will be vital. The development of an effective written style will therefore be an important aspect of progression in history and of use in the vast majority of degree courses.

WHAT WILL I STUDY?

YEAR 12

The Year 12 course will be divided into two units.

Unit 1 will look at the early Tudors. Students will look at the contrasting approaches of Henry VII and his son Henry VIII as the country emerged from the wreckage of the Wars of the Roses. The course allows students to study one of English history's most recognisable figures. The reign of Henry VIII (or Henry the Great as he expected to be remembered) left an indelible mark on the subsequent history of this country.

This course looks at his attempts to make an impact in Europe as a young king, his government of England and the course and impact of his break with the Roman Catholic Church in the 1530s. Finally we will look at the later years of Henry's reign when Henry becomes increasingly paranoid and unstable.

Unit 2 will be based on the transformation of Russia during the first half of the twentieth century. Students will explore the rule of the last Tsar of Russia, Nicholas II and his attempts to contain the rising tide of revolution. The role of the First World War in bringing about the downfall of the Tsar will be assessed, along with the damaging effect of Rasputin's influence before we look at the two revolutions of 1917, and the birth of the World's first communist state. The period of the Civil War will form the basis of an interpretations enquiry before students look at the unlikely rise of Stalin as Lenin's successor.

YEAR 13

In Year 13 students will engage in an enquiry into the reigns of Edward VI and Mary I when religious turbulence and economic difficulties have led some historians to describe the period as the Mid-Tudor Crisis. The final Tudor monarch, Elizabeth, will be the focus for much of the year. We will explore her attempts at religious compromise, her relationships with leading councillors and the challenges posed by foreign policy including the growing enmity with Philip II of Spain and the launch of the Spanish Armada.

Students will also study the rule of Stalin as he strengthened his grip on the country through terror and propaganda while transforming the industry and agriculture of Russia. Students will look at his terrifying regime but also explore the extraordinary challenges posed by the Second World War and the USSR's emergence as a superpower.

The final element of the course will be a personal investigation into the Civil Rights movement in America. After a brief taught course, students will identify their own question which looks at the period from 1865 to 1968. They may choose to focus on the impact of the Civil War on the position of African Americans, the importance of key figures such as Martin Luther King, Marcus Garvey or Malcolm X, or the reason for continuing opposition to the Civil Rights movement.

HOW WILL I BE ASSESSED?

Students will be assessed by completing two exams at the end of Year 13 worth 80% overall and will also complete a coursework piece worth 20% submitted before the summer exams.

WHAT EXTRA-CURRICULAR OPPORTUNITIES ARE THERE?

We currently run a trip to Rome and a trip to Hampton Court. We also provide opportunities to listen to historians as part of a lecture series and participate in Warwick Words.

“

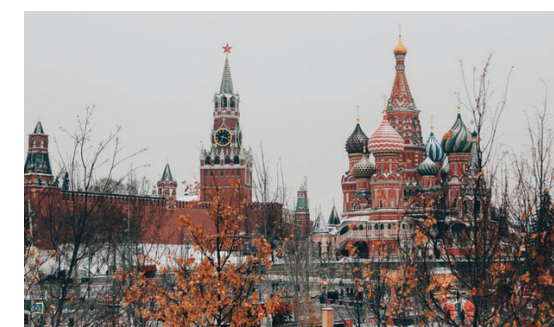
Students say

“History provides you with a breadth of knowledge, creating a foundation as to why today's society is the way it is.”

“Taking History can enable you to learn about the most fascinating personalities and influential events.”

“History equips you with key skills you need for university, like analysis, evaluation, debating events and evidence.”

”



INFORMATION TECHNOLOGY

DEPARTMENTAL CONTACT: Mrs Buxton – buxton.m@myton.co.uk

EXAMINING BOARD AND QUALIFICATION: OCR – LEVEL 3 CAMBRIDGE TECHNICAL EXTENDED CERTIFICATE

ENTRY REQUIREMENTS: At least a grade 4 in English and Maths

WHY STUDY THIS SUBJECT?

Studying IT prepares you to use a variety of software packages which are common in all lines of work. You will also develop an understanding of how advances in technology affect everyone.

By studying a range of software packages during this course you will have the skills to use any software package effectively. This course also supports creative and logical thinking which can be used in any other subject.

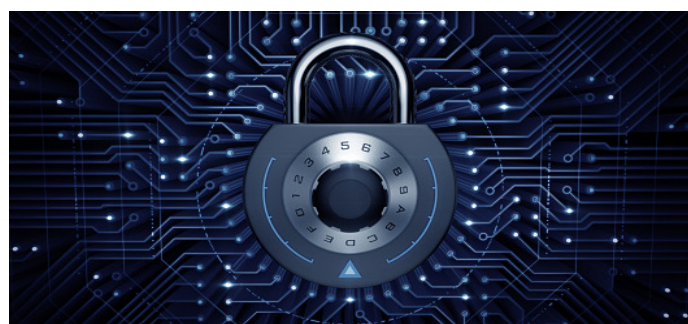
WHAT SKILLS WILL I DEVELOP?

You will:

- Develop a knowledge and understanding of information systems within a range of organisations
- Build an understanding of the main principles of solving problems using ICT

- Develop project management skills and an understanding of the need to work with others
- Learn website development, problem solving and analytical thinking skills

As part of the course we visit Disneyland Paris to gain an insightful and hands-on understanding of how IT is not only applied but also thrives within the dynamic billion dollar entertainment industry. This unique opportunity allows us to explore cutting edge technology that powers the magic behind the scenes of one of the world's most iconic and successful theme parks.



WHAT WILL I STUDY?

UNIT 1 – Fundamentals of IT

This mandatory unit will help you develop your understanding and prepare to study real systems, hardware and software. You will study components of computers and how they are used in industry.

UNIT 2 – Global Information

This unit explains how information is held and used by different types of users. You will learn about how organisations use internal and external sources of data and the types of data and information that may be found. You will study the importance of good management of data and information and the impact that this can have on the ability of organisations to compete with one another.

UNIT 3 – Cyber Security

You will learn about what cyber security is, the threats that users and systems face, the ways in which you can protect yourself and your systems from harm and other cybersecurity issues. This is a mandatory unit for this qualification.

Plus additional units in Year 13:

- Product development
- Advanced website design skills
- Internet of everything

You will learn how businesses connect through the internet and produce a new innovation using latest connection methods.

HOW WILL I BE ASSESSED?

3 exams Mandatory Units 1 to 3 (70%) and 2 coursework units from above (30%).

“

Students say

“An exciting course that is delivered at your pace with relevant content that will help you achieve a sound knowledge for the workplace.”

”

WHAT ARE MY POST-18 OPTIONS?

This course will be highly relevant to a number of careers in ICT, from technical support roles to network design and security analysis. It also provides a very strong basis for further learning at degree level. Careers in the IT industry are extremely well paid and have a secure future in the digital world that we live in today.

WHAT EXTRA-CURRICULAR OPPORTUNITIES ARE THERE?

There will be opportunities to practise techniques outside of lesson time, for example taking apart and reconfiguring PCs, setting up networks and testing their security, plus an educational trip to Disneyland Paris investigating ICT systems in context. Students will have the opportunity to volunteer at the Computing Department's Gaming and Coding Club with our local primary schools.

LAW

DEPARTMENTAL CONTACT: Mr Hone – hone.s@myton.co.uk
EXAMINING BOARD AND QUALIFICATION: EDUQAS – A LEVEL
ENTRY REQUIREMENTS: At least a grade 6 in GCSE English Language

WHY STUDY THIS SUBJECT?

Law is a captivating and thought-provoking A Level that provides fantastic insight into what it would be like to study Law at university. This course is ideal for students interested in pursuing further study or a career in the legal sector. It also appeals to those keen on current affairs, helping you develop a deeper understanding of why the law addresses issues in specific ways.

Law affects every part of our lives, from the way we interact with one another to how society is governed. It shapes our rights and responsibilities and informs our understanding of justice and fairness. By studying Law, you will gain a profound appreciation for the mechanisms that uphold social order and protect individual freedoms.

Studying Law equips you with essential skills such as effective communication, analytical thinking, and research proficiency. Moreover, it pairs exceptionally well with other social sciences, such as Sociology and Business, allowing for a rich interdisciplinary approach to understanding societal structures. This course will challenge you to think critically about real-world issues and encourage you to stay informed about current events and their implications for our legal system.

WHAT TOPICS WILL I STUDY?

YEAR 12:

- Tort Law: Explore the principles of civil liability and compensation.
- Legal System and Law Making: Understand how laws are created and the institutions involved in the legal process.

- Criminal Law: Delve into the intricacies of criminal offences, including fatal and non-fatal crimes, and various defenses.

YEAR 13:

- Criminal Law (continued): A deeper examination of criminal justice and legal principles.
- Contract Law: Investigate the principles and applications of contract law, understanding the rights and obligations that arise from agreements.

WHAT EXTRA-CURRICULAR OPPORTUNITIES ARE THERE?

We encourage students to participate in our Student Law Society, which is run by the students themselves. This initiative fosters leadership, teamwork, and organizational skills as members plan events, debates, mooting, and guest speaker sessions.

Additionally, our trips to courts and prisons offer real-world experiences that deepen students' understanding of the legal system. These activities enable students to engage with legal concepts practically, enhancing their knowledge and building confidence in their abilities.

WHAT ARE MY POST-18 OPTIONS?

A Level Law opens up a multitude of post-18 options. Whether you aspire to study Law at university or pursue a career in related fields such as politics, social justice, or public service, this subject provides a solid foundation. The skills you develop—critical thinking, effective communication, and analytical reasoning—are highly transferable and sought after in various sectors.



MATHEMATICAL STUDIES (CORE MATHS)

DEPARTMENTAL CONTACT: Miss Patel – patel.sn@myton.co.uk
EXAMINING BOARD AND QUALIFICATION: AQA LEVEL 3 MATHEMATICAL STUDIES
ENTRY REQUIREMENTS: Grade 4 in Maths

WHY STUDY THIS SUBJECT?

This is a one-year course for anyone who wants to build on their GCSE maths skills. Studying Core Maths helps students develop their quantitative and problem-solving skills. This gives them confidence in understanding the mathematical content in other courses they are studying such as Psychology, Geography and Business. It helps students become better informed citizens, able to make sense of the information they will be presented with in employment, further study or later life.

Some universities reduce their entrance requirements with a good grade in Core maths. The UCAS points are the same as an AS level.

WHAT SKILLS WILL I DEVELOP?

Core Maths develops the mathematical skills students gained at GCSE. It focuses on using and applying maths to solve problems drawn from other subjects, work, and real life. The Core Maths course includes new content such as financial maths and statistics.

Personal finance skills: students will learn about subjects such as student loans, mortgages, and payslips which will help prepare you for work and/or university.

Statistics: You will learn how to collect and statistically analyse interpret information. This is useful if you are studying a social science subject and give you the skills to understand scientific papers.

WHAT ARE MY POST-18 OPTIONS?

Core Maths is looked upon favourably by many universities when considering applications for degree study. They recognise the transferable skills and knowledge that students gain through studying Core Maths.

It offers valuable preparation for the quantitative skills students will need for subjects for which AS/A Mathematics is not required such as Psychology, Geography, business-related courses, Sports and Social Sciences, and the Life Sciences.

WHAT WILL I STUDY?

Unit 1 – Representing data: box plots, histograms

Unit 2 – Personal Finance: tax, mortgages, inflation, loans, budgeting

Unit 3 – Estimation and modelling

Unit 4 – Critical Analysis

Unit 5 – Statistics: Normal Distribution

Unit 6 – Statistics: Correlation and Regression

HOW WILL I BE ASSESSED?

You will have two externally assessed exams at the end of the year 12.

Paper 1: Data Analysis, estimation and finance (60 marks, 90 minutes)

Paper 2: Critical Analysis and statistics (60 marks, 90 minutes)

Preliminary information is used in both exams and calculators are allowed.

“ Students say

“Core Maths was useful in Psychology (research methods) and maths questions in Geography.”

“I found Core Maths helpful in other subjects where I would have struggled otherwise.”

Core Maths was very useful for my other subjects. In Business I used my knowledge of confidence intervals and in Biology I used my knowledge of standard deviation.”



MATHS AND FURTHER MATHS

DEPARTMENTAL CONTACT: Mr Ealden – ealden.a@myton.co.uk

EXAMINING BOARD AND QUALIFICATION: EDEXCEL A LEVEL MATHS (9MA0) AND FURTHER MATHS (9FA0)

ENTRY REQUIREMENTS: At least a grade 7 or above in GCSE Maths, grade 7 or above for A Level Further Maths

WHY STUDY THIS SUBJECT?

Mathematics is arguably humankind's greatest achievement. It enables us to make sense of the world around us, and to plan for the future world that does not yet exist. Everything we own is designed, produced and priced using mathematics, and with the continued advances in technology, mathematicians and maths-related careers are very much in demand.

WHAT SKILLS WILL I DEVELOP?

- Problem solving
- Critical thought and logical reasoning
- Statistical analysis and modelling

WHAT WILL I STUDY?

For A level Maths, two thirds of the course is 'core maths', which is primarily algebra, trigonometry, coordinate geometry and calculus, and applications of these. The remaining third of the course is titled 'applications' and is a mixture of statistics and mechanics.

For Further Maths, content builds on the themes above, but also includes new areas such as complex numbers and differential equations. Both mechanics and statistics are studied in greater detail, and there is the option to also study decision maths.

HOW WILL I BE ASSESSED?

100% examination at the end of Year 13.

A level Maths has 3 x 2-hour exams, each worth 100 marks. Two of these test 'pure maths'; the other is combined statistics and mechanics.

A level Further Maths has 4 x 90-minute exams, each worth 75 marks. Two of these are compulsory 'core pure maths'; the other two are chosen from either Further Statistics, Further Mechanics, Decision Maths, or Further Pure Maths.

All students will need to purchase a Casio FX-991CW Classwiz calculator.

HOW WILL I BE ASSESSED?

100% examination at the end of Year 13.

A level Maths has 3 x 2-hour exams, each worth 100 marks. Two of these test 'pure maths'; the other is combined statistics and mechanics.

A level Further Maths has 4 x 90-minute exams, each worth 75 marks. Two of these are compulsory 'core pure maths'; the other two are chosen from either Further Statistics, Further Mechanics, Decision Maths, or Further Pure Maths.

WHAT EXTRA-CURRICULAR OPPORTUNITIES ARE THERE?

All students enter the senior maths challenge, with the possibility of competing in further rounds of the competition. We also enter a team into the senior team Maths challenge, in which we have often won the local heat and progressed to the national final in London.

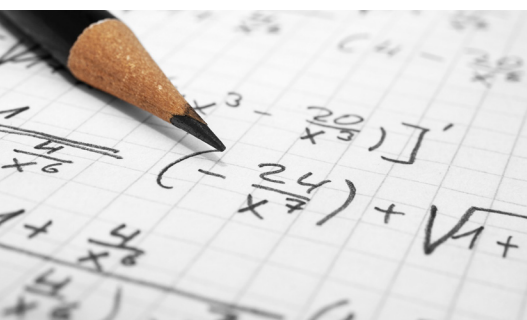
“

Students say

“It builds on GCSE maths and extends it in more interesting ways.”

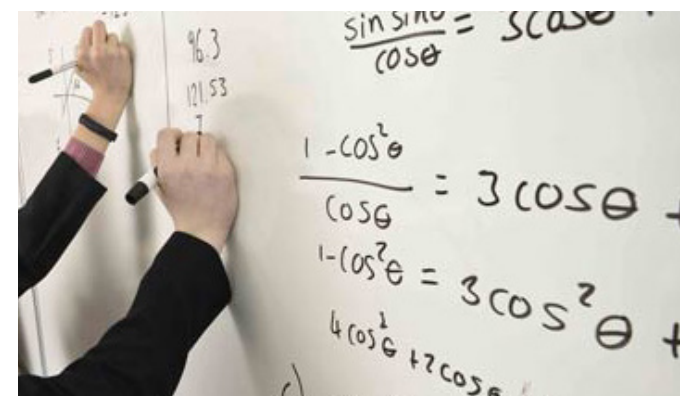
“I feel I am learning skills that will be useful in my university study and future career.”

”



WHAT ARE MY POST-18 OPTIONS?

Maths is a 'facilitating subject' and therefore a multitude of post-18 options are available. Aside from further study within the subject, it is useful for courses and careers in the fields of medicine, engineering, computer science, accountancy, business, and the sciences.



MFL (FRENCH, GERMAN, SPANISH)

DEPARTMENTAL CONTACT: Mr Broe – broe.d@myton.co.uk

EXAMINING BOARD AND QUALIFICATION: AQA – A LEVEL

ENTRY REQUIREMENTS: At least a grade 6 GCSE in the chosen language

WHY STUDY THIS SUBJECT?

Languages are great if you want to communicate with others and enhance your cultural awareness.

You will become a proficient linguist with a range of transferable skills and the chance to study/work abroad.

WHAT SKILLS WILL I DEVELOP?

Communication skills, problem solving skills, listening skills, competence in English, increased confidence, the ability to 'think on your feet', translation skills both into and from the language, essay writing skills.

You will become a proficient speaker and be able to understand others on a range of topics in your chosen language.

WHAT WILL I STUDY?

FRENCH

Aspects of French-speaking society: current trends

- The changing nature of family
- Cyber-society
- The place of voluntary work

Artistic culture in the French-speaking world

- A culture proud of its heritage

- Contemporary francophone music

- Cinema: the 7th art form

Aspects of French-speaking society: current issues

- Positive features of a diverse society
- Life for the marginalised
- How criminals are treated

Aspects of political life in the French-speaking world:

- Teenagers, the right to vote and political commitment
- Demonstrations, strikes – who holds the power?
- Politics and immigration

Also a book and a film.

GERMAN

Aspects of German-speaking society

- The changing state of the family
- The digital world
- Youth culture: fashion and trends, music, television

Artistic culture in the German-speaking world

- Festivals and traditions

- Art and Architecture
 - Cultural life in Berlin, past and present
- Multiculturalism in German-speaking society

- Immigration
- Integration
- Racism

Aspects of political life in the German-speaking World

- Germany and the European Union
- Politics and Youth
- German reunification and its consequences

Also a book and a film.

SPANISH

Aspects of Hispanic society

- Modern and traditional values
- Cyberspace
- Equal rights

Artistic culture in the Hispanic World

- Modern day idols
- Spanish regional identity
- Cultural heritage or cultural landscape

Multiculturalism in Hispanic society

- Immigration
- Racism
- Integration

Aspects of political life in the Hispanic world

- Today's youth, tomorrow's citizens
- Monarchies, republics and dictatorships
- Popular movements

Also a book and a film.

HOW WILL I BE ASSESSED?

Paper 1 – Mixed Skills paper: Listening, Reading, Translation into English, Translation into the language of study.

Written exam – 2 hours 30 minutes – 40% of A level

Paper 2 – Two books from the set list or one book from the set list and one film from the set list.

Written exam – 2 hours – 30% of A level

Paper 3 – Speaking exam: a conversation based on one of the sub-topics studied and a conversation on an independent research project.

“

Students say

“French is the lesson we most enjoy coming to; I feel as though I can really speak the language now.”

“Spanish is the exam we feel best prepared for.”

“I can't believe I have improved my German so much in such a short space of time.”

”

WHAT EXTRA-CURRICULAR OPPORTUNITIES ARE THERE?

Currently there is a mentoring scheme for supporting younger language learners. There is also the opportunity to take part in the national United Kingdom Linguistics Olympiad. Further opportunities include;

- Year 12 work experience abroad
- A level Spanish theatre trip to London
- Warwick University Languages Taster Day
- A level Spanish trip to Valencia

WHAT ARE MY POST-18 OPTIONS?

The opportunity to study languages at university combined with most other subjects is an attractive route for many A level linguists.

There are a multitude of courses on offer that focus on literature, history, law, tourism, society, culture, film, politics, art and many more.

The main routes at university for further study are: to continue studying the linguistic and cultural aspects of the language, translation and interpretation, or as a minor subject that is studied alongside a main subject (French with Law, for example). Most universities encourage the combination of a foreign language with another subject as they recognise the skills that studying a foreign language can develop.

Some of the more popular jobs that benefit from having an A level in a foreign language are journalism, marketing, tourism, law, politics, teaching, police service, civil service, espionage, intelligence gathering and international relations and finance. Having a qualification in a foreign language is looked upon very favourably by most employers.



MUSIC

DEPARTMENTAL CONTACT: Ms Harrison – harrison.w@myton.co.uk

EXAMINING BOARD AND QUALIFICATION: EDUQAS – A LEVEL

ENTRY REQUIREMENTS: Ideally grade 6 in GCSE Music plus proficiency on any instrument or voice; students with a high level of performing skills and theoretical knowledge without GCSE Music may be considered.

WHY STUDY THIS SUBJECT?

If you are passionate about music of any genre, want to develop your knowledge of how music works, explore a range of musical styles, perform and compose, then this is the subject for you.

You will need a high level of performing ability on any instrument or voice (approximately grade 4/5 standard at the start of the course) and must be prepared to study musical theory including reading score notation if this is not already familiar to you.

WHAT SKILLS WILL I DEVELOP?

You will develop a range of skills, including honing your instrumental technique at a high level, developing your confidence through performing, and receiving expert feedback to improve your performance and presentation skills. Through regular class practice activities, you will learn to play music at sight or on minimal rehearsal, reading from score notation, tab and lead sheets, and will develop your ensemble and communication skills. You will learn to interpret a range of musical notations, including orchestral score notation (treble, bass, alto and tenor clefs), transposing instruments, and performance directions.

You will learn to analyse chord progressions, cadences and modulation, developing an in-depth understanding of music which will inform your own compositions.

You will study the history of music with a focus on Western art ("classical" orchestral) music from 1750 up to the present day, alongside one additional area of study (currently Rock and Pop).

WHAT WILL I STUDY?

The course is divided into three assessed components:

- Component 1: Performing
- Component 2: Composing
- Component 3: Appraising

Students have the option to specialise in either performing or composing:

- **Option A:** A final recital performance of at least 3 pieces lasting 10-12 minutes in total, 35% of the qualification plus a portfolio of two compositions lasting 4-6 minutes in total and a composing log, 25% of the qualification.
- **Option B:** A final recital performance of at least 2 pieces lasting 6-8 minutes, 25% of the qualification plus a portfolio of three compositions lasting 8-10 minutes in total and a composing log, 35% of the qualification.

The remaining 40% of the qualification with either option is gained through a final written examination (listening paper).

YEAR 12

Students will study the history of Western art music, focusing on The Development of the Symphony 1750-1900 for Area of Study A: The Western Classical tradition. This will include the study of one set work: Symphony No. 104 in D major, 'London', by Haydn, an overview study of a second work and composition exercises, in preparation for composition work in the classical style in Year 13. Students will also begin to study Area of Study B: Rock and Pop 1960-2000 (including pop, rock, soul, funk and folk), which will be taught through a range of listening and practical activities, with regular opportunities to perform in class and experiment with composing in a range of related styles.

There will be a mock listening paper at the end of Year 12 which will test students on the Haydn set work as well as a range of unprepared listening extracts.

YEAR 13

The study of Western Art Music continues with Area of Study E: Into the Twentieth Century. Students will learn about developments in musical styles including impressionism, expressionism, serialism and neo-classicism, and will study two more set works in depth; Trio for Oboe, Bassoon and Piano: Movement II by Poulenc and Three Nocturnes: No. 1 – Nuages by Debussy. Students will also deepen their knowledge of the classical and romantic symphonies and the set works studied in Year 12, as well as further developing their understanding of Rock and Pop.

Performance and compositional work will continue throughout the year, as students prepare for their final assessments in components 1 and 2.

HOW WILL I BE ASSESSED?

All assessment takes place in Year 13. The coursework components 1 and 2 are worth 60% of the overall A level. The performance component is assessed through a final recital in front of an external examiner in March/ April. The composition component is submitted in April for external moderation. The appraising component worth 40% is assessed through a 2 hour 15 minute listening paper in May, with questions on the set works and on unprepared extracts from the Western art music tradition and Rock and Pop.

“

Ms Harrison says

“Unlike more traditional A level Music courses, which tend to focus solely on Western art music, the Eduqas course enables students to study an additional area of interest (currently Rock and Pop). It also allows students to specialise in either composing or performing, according to their personal strengths, and prepares students for a wide range of higher education courses, including music courses with both a traditional and contemporary focus.”

”

WHAT ARE MY POST-18 OPTIONS?

The Music A level course offers a broad foundation for students wishing to continue their studies at university, college or conservatoire. The A level prepares students for courses with a historical/theoretical basis and those with a performing or composing emphasis including degree courses in Music, Popular Music or Jazz. An A level in Music can prepare students for a range of careers in music, including performance, composition, sound recording, music therapy, arts administration, events management, music journalism, publishing and education.

Music helps you to develop transferable skills including creativity, self-expression, critical thinking, discipline, communication, teamwork and confidence which are valuable in a range of professions. It also sits well alongside a range of other A level subjects such as English, Humanities, Maths and Science. It is also a wonderful way to meet new people with similar interests and can become a rewarding pastime for life.

WHAT EXTRA-CURRICULAR OPPORTUNITIES ARE THERE?

Students will be expected to take an active role in the music department through participation in and leadership of performing groups at Myton and take advantage of performance opportunities both in and out of school.

There will be concert trips and activities relevant to the course which may include a symphony or chamber music concert, music theatre or opera performance trip, rock concert or jazz evening and workshops led by visiting professionals as appropriate.

Students are encouraged to make use of the department's facilities during study periods and after school, including practice rooms, recording studio and Mac suite (Mac workstations running Logic Pro).



PHILOSOPHY, ETHICS AND THEOLOGY

DEPARTMENTAL CONTACT: Miss Jones – Jones.h@myton.co.uk
EXAMINING BOARD AND QUALIFICATION: OCR – A LEVEL
ENTRY REQUIREMENTS: At least a grade 5 in GCSE RE and a grade 5 in English

WHY STUDY THIS SUBJECT?

This subject deals with issues and questions which, when you have faced them and challenged the basic principles on which our lives are based, will make you prepared as a person to deal with anything life may throw at you.

This course is for everyone; you do not need a religious background or personal faith, you can be an atheist, agnostic or theist. You must be willing to be open-minded, thoughtful and ready to meet the challenge of an exciting new area of study.

WHAT SKILLS WILL I DEVELOP?

The course is seen by employers and people in higher education to be valuable because you will develop some very important skills:

- Communicating ideas orally and in written formats
- Research and investigation
- Open-mindedness and an ability to consider all points of view
- The ability to be independent and think for yourself and reach your own conclusions
- Analysis and critical evaluation of text and different people's ideas

WHAT WILL I STUDY?

Philosophy of religion

- Ancient philosophical influences
- The nature of the soul, mind and body
- Arguments about the existence or non-existence of God
- The nature and impact of religious experience
- The challenge for religious belief of the problem of evil
- Ideas about the nature of God
- Issues in religious language

Religion and ethics

- Normative ethical theories
- The application of ethical theory to two contemporary issues of importance

- Ethical language and thought
- Debates surrounding the significant idea of conscience
- Sexual ethics and the influence on ethical thought of developments in religious beliefs

Developments in religious thought

- Religious beliefs, values and teachings, their interconnections and how they vary historically and in the contemporary world
- Sources of religious wisdom and authority
- Practices which shape and express religious identity, and how these vary within a tradition
- Significant social and historical developments in theology and religious thought
- Key themes related

HOW WILL I BE ASSESSED?

There will be no coursework; assessment will be by examination only. Three 2-hour exams at the end of the two-year course.

“
Students say
 “Very interesting!”
 “Be prepared to be challenged!”
 “You have to be open minded.”
 “It will really test your own thoughts and beliefs and definitely keep you thinking.”
 “I’d really recommend it!”
 ”



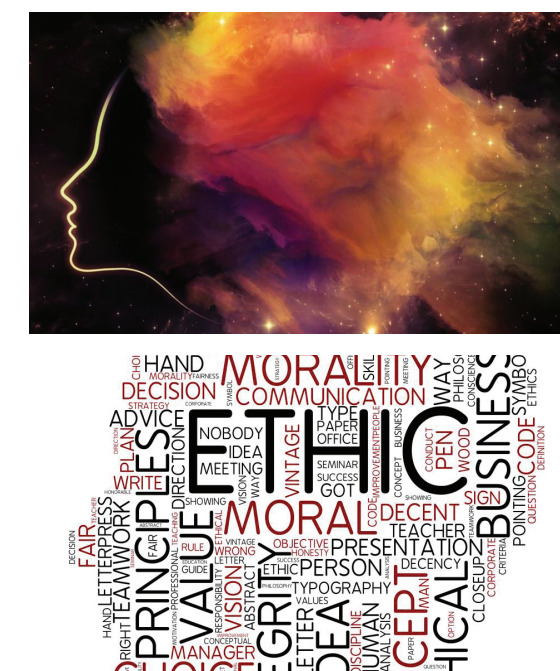
WHAT ARE MY POST-18 OPTIONS?

The great virtue of Philosophy, Ethics and Theology is that it teaches not what to think, but how to think. The skills it hones are the ability to analyse, to question orthodoxies and to express things clearly, the ability to formulate questions and follow arguments is the essence of education.

It has always been a good training for the Law; but it is equally useful for Computer Scientists, Medicine and Humanity subjects. Philosophy, Ethics and Theology is the ultimate ‘transferable work skill’.

WHAT EXTRA-CURRICULAR OPPORTUNITIES ARE THERE?

There is the opportunity throughout the course to attend conferences to meet other students and leading scholars, as well as a trip to Cadbury's World for a talk on Kantian Business Ethics and to enjoy the attractions, Warwick University for a Philosophy Day and St Pauls Cathedral in London to explore Christianity.



PHOTOGRAPHY

DEPARTMENTAL CONTACT: Mrs EThompson – thompson.e@myton.co.uk

EXAMINING BOARD AND QUALIFICATION: OCR - A LEVEL PHOTOGRAPHY (H603)

ENTRY REQUIREMENTS: Grade 6 in either GCSE Photography, Art or Media (non specialist applications may be considered upon submission of a practical portfolio of photography work)

WHY STUDY THIS SUBJECT?

If you have an aptitude for the subject, are creative, imaginative, enthusiastic and above all, have ideas to communicate you will love this subject. Photography is an incredibly rewarding course for motivated students, however you should be prepared to work hard to develop your technical and analytical skills.

Specifically, this course provides students with the opportunity to respond to the visual world with the aid of both digital and analogue cameras and image manipulation.

WHAT SKILLS WILL I DEVELOP?

The main purpose of any Photography course is to develop your ability to look at the world and to respond to it in a personal and creative way. The skills you will gain will be varied. You will develop a working knowledge of materials, practices and techniques within Photography, this may include:

- A range of approaches to working with photographic images, such as observation, documentary, analysis, expression, communication and fantasy.
- A range of photographic techniques, such as the

control of shutter speed and the use of aperture, black and white photography and darkroom development.

- The ability to experiment with both analogue and digital imagery, ideas and purposes.
- The ability to make effective use of different lighting, locations, lenses, props and human beings.

WHAT WILL I STUDY?

YEAR 12

During the first two terms, students will produce a portfolio of practical work which demonstrates their application and development of new workshop-based skills taught by their teacher. These practical sessions will introduce students to new techniques such as abstraction and macro photography as well as revisit and build on previous techniques such as studio lighting and shutter speed. Students will be encouraged to experiment with their own ideas and develop critical/contextual awareness through independent research. Students will practise essential study skills and approaches to learning related to the A level assessment objectives.

WHAT ARE MY POST-18 OPTIONS?

Students can go to university to study Photography, Photo Journalism, Graphic Design, Animation, Web Design, Art and Design, Film Studies, and a whole range of degrees related to the media industries (film, TV and print).

The study of Photography can also help you to develop transferable skills that you can take into any job or career. such as analytical thinking, creative problem solving, the ability to realise ideas and intentions and plan for complex outcomes and the confidence to express and justify your personal opinion.

Success in this course requires determination and dedication but above all, self-motivation, organisation and a love of Photography and Art in general.

Students will develop their own personal ideas after Easter where they will investigate, research, plan for and produce a body of practical work based on a theme of their choosing. This work will form the start of their assessed work in Year 13. The exciting part about this course is that you work to your strengths and that you develop ideas and responses that interest you. You are the driving force.

YEAR 13

The A level qualification is a two-year qualification whereby students will build on experiences and techniques gained in Year 12.

Component 1: Personal Investigation. Candidates will be required to submit two elements for this component. A portfolio of practical work showing their personal response to their own starting point and a related written study. Within this unit (the personal investigation), students develop a personal project based entirely on their own ideas, issues or concepts. This is supported by a written element (a related personal study) of between 1000-3000 words.

Component 2: Externally Set Task. The early release paper will be issued in January and will provide candidates with a number of themes, each with a range of written and visual starting points, briefs and stimuli. From these, one must be selected upon which to base a response and students develop their ideas over a ten-week period. At the end of this there will be fifteen hours of supervised time in which students will aim to realise their ideas into an outcome.

HOW WILL I BE ASSESSED?

The coursework (Component 1) is worth 60% of the overall A level.

The externally set task (Component 2) is worth 40% of the total A level.

WHAT EXTRA-CURRICULAR OPPORTUNITIES ARE THERE?

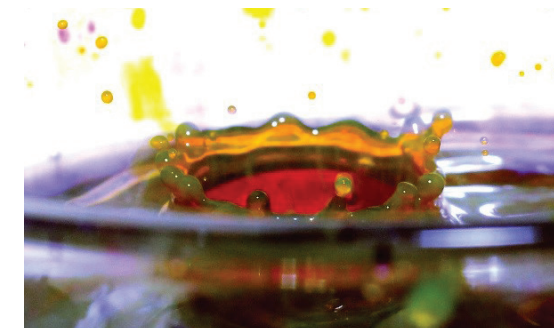
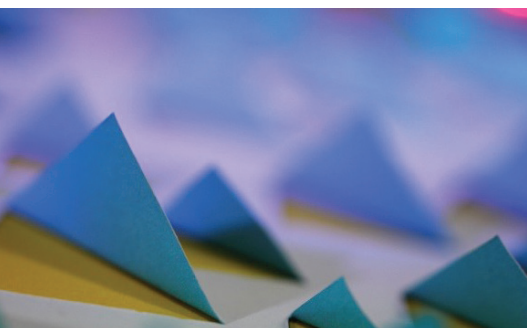
Students can expect to participate in a range of visits to a variety of locations, photography galleries and museums in order to supplement and enhance their classroom studies.

The Department provides extra art sessions on request and can offer a specialist room for personal study when Sixth Form students need it.

“
Students say

“I took Photography as a way of expressing myself through photographs/digital images. If you are not too keen on the element of drawing or painting in Art, it’s a fantastic alternative!”

”



PHYSICAL EDUCATION

DEPARTMENTAL CONTACT: Mr Mawle – mawle.a@myton.co.uk

EXAMINING BOARD AND QUALIFICATION: OCR – A LEVEL

ENTRY REQUIREMENTS: At least a grade 5 in GCSE PE and at least a grade 5 in Science. Students should also have a strength in one practical sport or as a coach.

WHY STUDY THIS SUBJECT?

Studying A level Physical Education will give you a fantastic insight into the amazing world of sports performance. Not only will you have the chance to perform or coach a sport through the non-exam assessment component, you will also develop a wide ranging knowledge into the how and why of physical activity and sport.

Have you ever wondered:

- Why some people run faster than others?
- How your personality affects your performance?
- How technology can help you?

It does complement certain other subjects, in particular Biology and Psychology as there is overlap in certain areas covered in these subjects.

WHAT SKILLS WILL I DEVELOP?

The subject allows students to develop their knowledge of a range of theoretical topics including: Anatomy and Physiology, Exercise Physiology, Biomechanics, Skill Acquisition, Sports Psychology as well as Sport in Society and Contemporary Issues in Sport.

In the practical context students develop their ability to evaluate and analyse physical performance in order to improve not only their performance of skills, tactics and fitness but also coaching roles.

They will be required to research and apply through independent tasks their understanding of physical activities as well as develop their ability to apply structured answers of varying lengths. They will also need to develop their confidence in orally evaluating a specific sporting performance.

WHAT WILL I STUDY?

Component O1

- Applied anatomy and physiology
- Exercise physiology
- Biomechanics

Physiological factors affecting performance – 90 marks – 2-hour written paper.

30% of total A level

Component O2

- Skills acquisition
- Sports psychology

Physiological factors affecting performance – 60 marks – 1-hour written paper.

20% of total A level

Component O3

- Sport and society
- Contemporary issues in physical activity and sport

Socio-cultural issues in physical activity and sport – 60 marks – 1-hour written paper.

20% of total A level

Component O5

Practical performance – 30 marks – non-exam assessment.

15% of total A level

Component O6

Evaluating and analysing performance for improvement – 30 marks – non-exam assessment.

15% of total A level

HOW WILL I BE ASSESSED?

There will be a mixture of exam-based assessments and a Performance Analysis task, as well as practical assessments in 1 sport, either as a performer or a coach. This takes place during the second year, but you need to keep an ongoing log of performance/coaching through the two years. Certain individuals are required to undertake a moderation assessment in May.

WHAT EXTRA-CURRICULAR OPPORTUNITIES ARE THERE?

Associated trips to sports venues, revision conferences and guest speakers will be included within the course. Fitness testing and biomechanical experiments will take place at school or at other designated venues, such as Birmingham/Bath Universities. An annual trip to Rugby School to develop a more practical understanding of the role of sport within public schools will take place if possible in the autumn/winter term of the second year.

“

Students say

“I really enjoy this subject, not just because I have an interest in sport, but because it provides me with a real insight into what truly happens inside my body, both physically and mentally when I perform.”

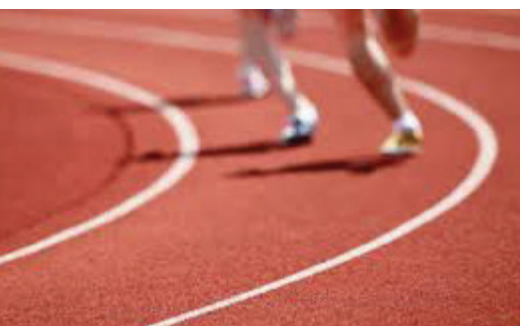
”

“

Mr Mawle says

“Throughout the course, students need to be regularly competing in their designated sport both inside and outside of school at club level and above.”

”



PHYSICS

DEPARTMENTAL CONTACT: Mr Benjamin – benjamin.j@myton.co.uk

EXAMINING BOARD AND QUALIFICATION: OCR (SPECIFICATION A) – A LEVEL

ENTRY REQUIREMENTS: At least a grade 6 in GCSE Physics or 6-6 in GCSE Combined Sciences and a 6 in GCSE Maths

WHY STUDY THIS SUBJECT?

Unlike the other sciences, physics has no limits – EVERYTHING in the universe can be related to physics and we would be lost without it.

Mobile phones, computers, the internet – all just some of the things invented by physicists and they are constantly finding new things. Just imagine what will be invented this time next year, let alone once you have finished your A level qualification!

Physics is more than just a subject. It also deals with the big questions – will we ever be able to travel back in time? Why do we always find the smallest bits of cereal at the bottom of the packet?

Physics is particularly suitable for people who:

- Enjoy finding out about and understanding how the world works
- Like analysing and solving problems
- Enjoy a practical approach to learning
- Want to develop being logical and numerate
- Want to develop their communication skills
- Want to work in a team

WHAT SKILLS WILL I DEVELOP?

There is a large jump between GCSE Physics or Science and A level. You will build on the topics you've learnt, but to a much higher level of understanding.

Physics is a subject that teaches and refines many transferable skills, leaving you with lots of options at the end of the course. You will be more creative, gain experience working in a team, be able to gather relevant information and analyse it effectively.

WHAT WILL I STUDY?

YEAR 12

Module 1 – Development of practical skills in physics

Module 2 – Foundations of physics

(Physical quantities and units, analysing data, nature of quantities)

Module 3 – Forces and motion

(Motion, forces, work, energy, power, materials, Newton's law of motion, momentum)

Module 4 – Electrons, waves and photons

(Current, charge, energy, power, resistance, electrical circuits, waves, quantum physics)

YEAR 13

Module 5 – Newtonian world and astrophysics

(Thermal physics, circular motion, oscillations, gravitational fields, astrophysics, cosmology)

Module 6 – Particles and medical physics

(Capacitors, electric fields, electromagnetism, nuclear and particles physics, medical imaging)

HOW WILL I BE ASSESSED?

The final grade is entirely assessed by exam. Alongside this, you will be awarded a pass/fail in Practical Skills, which are assessed throughout the course by your teacher.

Exam 1 Modelling physics – Assesses modules 1, 2, 3 and 5 (100 marks, 2hr 15, 37%)

Exam 2 Exploring physics – Assesses modules 1, 2, 4 and 6 (100 marks, 2hr 15, 37%)

Exam 3 Unified physics – Assesses modules 1-6 (70 marks, 1hr 30, 26%)

“

Students say

“I enjoy Physics as it actually shows you how the world works and why certain things do what they do. The lessons are entertaining and challenging and the support from the teachers is excellent.”

”



WHAT ARE MY POST-18 OPTIONS?

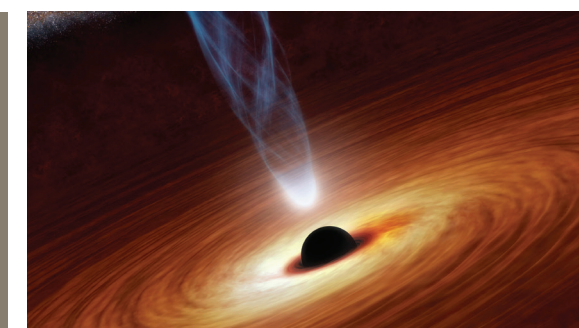
Physics A level is particularly suitable preparation for higher education courses in Pure Sciences, Applied and Vocational Sciences, Astronomy, Meteorology, Computer Science, Television, Engineering, Electronics, Medicine, Veterinary Science, Architecture and Mathematics.

The analytical nature of the course also prepares students for a wide variety of non-scientific courses such as Law, Accountancy and Finance. What do they have in common? They all start with a Physics A level.

WHAT EXTRA-CURRICULAR OPPORTUNITIES ARE THERE?

The Physics Department has close links with the Universities of Warwick and Birmingham and is developing its links with local Science, Technology, Engineering and Maths (STEM) companies.

We have offered a variety of opportunities in the past including the Engineering Education Scheme (where students work with an engineering firm to solve a real-life problem) as well as a trip to CERN in Geneva.



POLITICS

DEPARTMENTAL CONTACT: Mr Sykes – sykes.m@myton.co.uk
EXAMINING BOARD AND QUALIFICATION: EDEXCEL – A LEVEL
ENTRY REQUIREMENTS: At least a grade 5 in GCSE English Language

WHY STUDY THIS SUBJECT?

If you have an interest in the news stories about the country you live in and are prepared to discuss current issues, then you will enjoy this subject. Politics influences all of us, whether or not we are interested in what goes on at Westminster, so it seems sensible to find out as much as possible about the people, policies and institutions which shape our everyday life.

WHAT SKILLS WILL I DEVELOP?

- You will develop a lively and enquiring mind, along with the ability to work in a group and present a point of view, sometimes not necessarily the one you favour!
- You will learn how to assess evidence and present a logical and coherent argument.
- You will develop the skills to analyse questions and then write relevant answers.
- You will develop a critical understanding of the theories, motives and values which underpin political decision making.

WHAT WILL I STUDY?

- Paper 1 UK Politics and Core Ideas
- Paper 2 UK Government and Core Ideas
- Paper 3 Global Politics

HOW WILL I BE ASSESSED?

Three two-hour papers at the end of Year 13.

“
Students say
“Politics provides a real insight into the world of today. It is not a subject based in a text book; instead it allows you to experience the political drama as it happens. The discussions, activities and visits all add to our understanding. This is why I am passionate about politics and wish to study it at university.”
”



WHAT ARE MY POST-18 OPTIONS?

Politics combines well with a range of subjects in the Social Sciences and Humanities. For those students wishing to embark on Higher education it can help lead to university courses in areas such as Business, Law, Media, Economics, Sociology, Languages, History and of course Politics.

WHAT EXTRA-CURRICULAR OPPORTUNITIES ARE THERE?

Visits to the Houses of Parliament, the Westminster Politics Conference and the London Revision Conference are arranged for all students studying politics. Also, visits from local politicians and local politics society participation when relevant for this examined course.

PRODUCT DESIGN

DEPARTMENTAL CONTACT: Mr Whiting – whiting.g@myton.co.uk
EXAMINING BOARD AND QUALIFICATION: AQA – A LEVEL
ENTRY REQUIREMENTS: At least a grade 6 in GCSE Design Technology and a grade 5 in Maths and a grade 5 in English

WHY STUDY THIS SUBJECT?

This creative and thought-provoking qualification will give you the practical skills, theoretical knowledge and confidence to succeed in a number of careers. Especially those in the creative industries.

You will investigate historical, social, cultural, environmental and economic influences on design and technology, whilst enjoying opportunities to put your learning in to practice by producing products of your choice.

You will gain a real understanding of what it means to be a designer, alongside the knowledge and skills sought by higher education and employers.

WHAT SKILLS WILL I DEVELOP?

Core technical principles of designing, developing and making innovative products.

Practical application of technical principles, designing and making principles and specialist knowledge.

WHAT WILL I STUDY?

You will use your creativity and imagination to design, develop and make prototypes that solve real and relevant problems, considering your own and others' needs, wants and values.

The course is made up of a design and make project (Non-examined Element) and 2 written exams.

HOW WILL I BE ASSESSED?

Paper 1 – Technical Principles – 2.5 hours (120 marks – 30%)

Paper 2 – Designing and Making Principles – 1.5 hours (80 marks – 20%)

45-hour non-examined design and make project (50%)

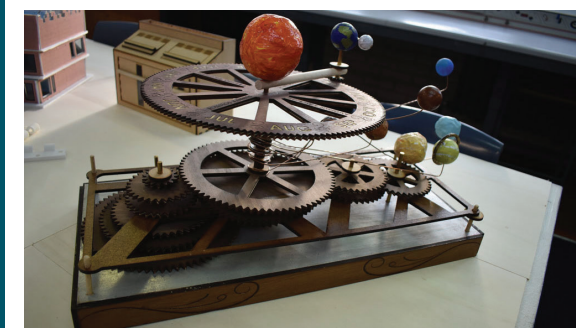
WHAT ARE MY POST-18 OPTIONS?

A college or university course leading to a career in a creative industry; design/engineering and architecture.

WHAT EXTRA-CURRICULAR OPPORTUNITIES ARE THERE?

The DT Department is open every afternoon after school to enable the students to work independently on their design projects.

In previous years we have run trips to conferences and workshops at universities and the Design Centre in London.



PSYCHOLOGY

DEPARTMENTAL CONTACT: Mrs Tonry – tonry.e@myton.co.uk
EXAMINING BOARD AND QUALIFICATION: AQA – A LEVEL
ENTRY REQUIREMENTS: At least a grade 5 in GCSE English Language PLUS a grade 5 in GCSE Maths or a grade 5 in Combined or Triple Science

WHY STUDY THIS SUBJECT?

Want to learn about the human mind? You've come to the right place!

Psychology is the study of people, the mind and behaviour. Why do people react to certain things in different ways? Are we all capable of murder? What can make people happy or sad, and how can we use that in the modern world?

Studying Psychology at A level gives you a good basic knowledge and provides an insight into what it might be like to be a professional psychologist.

WHAT SKILLS WILL I DEVELOP?

By the end of the course, you should have developed a critical approach to scientific methods and evidence, and a knowledge and understanding of how psychology works and its role in society.

You will also develop the following skills: effective oral and written communication, the ability to understand, analyse and use data, the ability to make critical evaluations, organisational skills and effective teamwork.

WHAT WILL I STUDY?

The topics covered are:

- Social Influence
- Memory
- Attachment
- Psychopathology
- Approaches in Psychology
- Biopsychology
- Research Methods
- Issues and debates in Psychology
- Relationships
- Schizophrenia
- Forensic Psychology

HOW WILL I BE ASSESSED?

You will sit three, two-hour papers in the summer of Year 13.

“

Students say

“I have found it really interesting finding out why people do what they do and why they are who they are.”

“I am really pleased that I have chosen to study Psychology. It has given me a broad understanding of key psychological approaches and methodologies. I have enjoyed it so much that I have decided to study it at university!”

”

WHAT ARE MY POST-18 OPTIONS?

Even if you decide to work in a non-psychology related field, the skills and knowledge that you develop studying Psychology will be helpful. It is a good way of keeping your options open. An increasing number of careers involve psychology such as teaching, human resources, sports, manufacturing and advertising. The entry requirements for accredited Psychology degree courses vary from one institution to another but studying Psychology at A level is useful preparation.

WHAT EXTRA-CURRICULAR OPPORTUNITIES ARE THERE?

Students in the past have had the opportunity to attend a conference at Warwick University to listen to psychologists talk about their work. We also invite in psychologists so that students can hear what it is like to work in the field.

SOCIOLOGY

DEPARTMENTAL CONTACT: Mrs Walkden – walkden.k@myton.co.uk
EXAMINING BOARD AND QUALIFICATION: AQA – A LEVEL
ENTRY REQUIREMENTS: At least a grade 5 in GCSE English Language

WHY STUDY THIS SUBJECT?

If you are interested in the people and the world around you then this may be the course for you. If you think that it is unfair that some have nothing whilst others live a life of luxury then this course will go some way to explaining the causes behind that. It is a challenging yet highly interesting course.

WHAT SKILLS WILL I DEVELOP?

- Empathy, understanding as well as the ability to debate about the current issues that are going on in society.
- Essay writing skills and the evaluation skills necessary to be successful at many other subject areas.

WHAT WILL I STUDY?

Unit 1 – Education with Theory and Methods – to include topics such as: Marxism, Feminism, Functionalism, Postmodernism and Research Methods.

Unit 2 – Topics in Sociology – to include topics such as: Families and Households, and Beliefs in Society.

Unit 3 – Crime and Deviance – to include topics such as the Relationship between Gender, Ethnicity, Class and Crime.

HOW WILL I BE ASSESSED?

100% exam at the end of Year 13.

“

Students say

“Sociology lessons are enjoyable and I like learning about different social issues such as poverty and class differences.”

“The course is so diverse and it is applicable to social situations in the real world. I would recommend Sociology to anyone.”

”

WHAT ARE MY POST-18 OPTIONS?

Due to the topics studied and skills developed, Sociology is a great choice of subject for people who want to work in careers such as nursing, social work, medicine, advertising, journalism, law and teaching amongst others.

WHAT EXTRA-CURRICULAR OPPORTUNITIES ARE THERE?

Trips to Sociology conferences, with other Sociology students from around the country.



ACADEMIC ENRICHMENT QUALIFICATIONS

EXTENDED PROJECT QUALIFICATION (EPQ)

COURSE CONTACT: Ms Stevens stevens.j@myton.co.uk

EXAMINING BOARD AND QUALIFICATION: AQA Level 3 EPQ

WHY STUDY THIS SUBJECT?

The Extended Project Qualification (EPQ) is a self-motivated project management course developing skills and independence that carries a maximum of 28 UCAS points. There are several types of EPQ. Students can either: write a research-based report, put on an event, make an artefact, such as a model, or create a piece of art or music.

During Year 12 students are taught the skills to undertake an EPQ so students have the opportunity to choose their own topic of research for the project. They are then responsible for their own learning and development with guidance from a member of staff who is their supervisor.

It is not compulsory for all students to go on to submit an EPQ.

CAREERS

During Sixth Form, students are given a wide range of support and help with future planning. We can help students with practical, impartial advice and guidance to ensure they make a smooth transition into their desired post-18 options. Our annual Careers Fair brings in over 50 different providers to meet our students and discuss the many opportunities open to them.

We deliver a Career Enrichment programme that sits within our Curriculum Programme. It incorporates:

- Support with UCAS applications
- Organised visits to external careers fairs
- Presentations and seminars from universities, apprenticeship providers and employers
- Support with finding a work experience placement
- Visits from former students to inform about university life and support applications to Oxbridge, etc
- Mock Interviews – All students will have the opportunity to undertake a mock interview with an employer to develop their employability skills

WHAT SKILLS WILL I DEVELOP?

The EPQ inspires and motivates students. Completion of the qualification gives them greater confidence and a sense of achievement. Additionally, it teaches new skills, such as independent research, project management, reflection and self-directed learning.

WHAT WILL I STUDY?

Students choose their own topic of research and are guided by their supervisor to choose a topic that interests them but forms a basis for their research.

HOW WILL I BE ASSESSED?

- You submit a 5000-word essay or artefact
- You complete a production log which documents the learning journey
- You complete a presentation to your peers on your process and content of your EPQ.

We also utilize the Unifrog platform which enables students to search for university and apprenticeships places with ease.

Furthermore we have developed extremely good links with employers, enabling us to deliver a range of activities including:

- Speed networking – which gives the students an opportunity to meet and engage with a wide range of employers
- Practice group exercises – often used by employers to help them recruit staff
- Bespoke sessions on employability skills delivered by local employers

Our Careers Advisor, Mrs Colette Wedgbrow (wedgbrow.c@myton.co.uk) is here to support your choices with one-to-one support available when you need it.

SIXTH FORM DESTINATIONS

GOOD LUCK TO ALL OF OUR FORMER MYTON SIXTH FORM STUDENTS TAKING UP THEIR FURTHER AND HIGHER EDUCATION PLACES, APPRENTICESHIPS, GAP YEARS AND EMPLOYMENT IN ACADEMIC YEAR 2024-2025. HERE ARE THE HIGHER EDUCATION COURSES AND DESTINATIONS:

COURSE	UNIVERSITY
Accounting and Finance	Aston University, Birmingham
Accounting and Finance	Birmingham City University
Accounting and Finance	Coventry University
Accounting and Finance	Liverpool John Moores University
Accounting and Finance	University of Birmingham
Accounting and Finance	University of Birmingham
Accounting and Finance	University of Birmingham
Accounting and Finance	University of Leicester
Accounting and Finance	University of the West of England (Bristol)
Accounting, Business Finance and Management	University of York
Advanced Applied Psychology	University of Chichester
Aerospace Engineering	Coventry University
Applied Medical Sciences	Swansea University
Architectural Engineering	University of Reading
Architecture	University of Plymouth
Automotive Engineering	University of Brighton
Biological Sciences	University of Brighton
Biological Sciences	University of Liverpool
Biomedical Science	Coventry University
Biomedical Science	University of Birmingham
Biomedical Science	University of Plymouth
Biomedical Sciences	Birmingham City University
Biomedical Sciences	Nottingham Trent University
Business and Marketing	Manchester Metropolitan University
Business Management	Manchester Metropolitan University
Business Management	Birmingham City University
Business Management and Marketing	Nottingham Trent University
Business Management with Marketing	Edinburgh Napier University
Chemical Engineering	Aston University, Birmingham
Childhood, Youth and Education Studies	Coventry University
Computer Games Technology	University of Portsmouth
Computer Science	University of Nottingham
Computing Science	University of East Anglia (UEA)
Concept Art for Games and Film	University of Staffordshire
Criminology	Manchester Metropolitan University
Criminology	Sheffield Hallam University
Criminology and Psychology	Coventry University
Cyber Security	Aston University, Birmingham
Cyber Security	Aston University, Birmingham
Cyber Security	Birmingham City University
Cyber Security	Birmingham City University
Dietetics	University of Hertfordshire
Digital Animation	Birmingham City University
East Asian Studies and International Relations	University of Leeds
Ecology and Wildlife Conservation	University of Reading
Economics	University of Birmingham

COURSE	UNIVERSITY
Economics	University of Birmingham
Economics with International Finance and Banking	Nottingham Trent University
English and Film & TV	Nottingham Trent University
English and Philosophy	Royal Holloway, University of London
English Literature	University of Leeds
English Literature	University of Manchester
Environmental Science	University of Liverpool
Ethical Hacking and Cyber Security	Coventry University
Fashion Business and Management	Manchester Metropolitan University
Fine Art	Coventry University
Forensic Science	De Montfort University
Geology and Physical Geography	Keele University
History	Royal Holloway, University of London
History and International Relations	Aston University, Birmingham
History and Spanish	University of Bristol
International Business with Spanish	Nottingham Trent University
International History and Politics	University of Leeds
International Relations and Politics	University of Sheffield
International Relations with Spanish	University of Birmingham
International Tourism and Hospitality Management	Oxford Brookes University
Journalism	Coventry University
Law	Nottingham Trent University
Law	The University of Law
Law	University of Birmingham
Law	University of Leeds
Law	University of Manchester
Law	University of Sheffield
Law (with Professional Experience)	Kingston University
Law and Hispanic Studies	University of Liverpool
Law with Criminology	Nottingham Trent University
Marketing	Birmingham City University
Marketing	University of Winchester
Marketing (with Placement Year)	University of Southampton
Mathematics	Coventry University
Mathematics	Coventry University
Mathematics	Loughborough University
Mathematics	Loughborough University
Mathematics and Statistics	University of Bath
Mechanical Engineering	Aston University, Birmingham
Mechanical Engineering	Cardiff University
Mechanical Engineering	Coventry University
Mechanical Engineering	Nottingham Trent University
Media Production	Bournemouth University
Media Production	Coventry University
Medicine	University of Southampton
Mental Health Nursing	Coventry University
Modern Languages	Aberystwyth University
Motorsport Engineering	Coventry University
Natural Sciences	Lancaster University
Neuroscience	University of Central Lancashire
Nursing	Oxford Brookes University

COURSE	UNIVERSITY
Occupational Therapy	Coventry University
Pharmaceutical and Cosmetic Science	De Montfort University
Philosophy	University of Winchester
Philosophy and Psychology	University of Glasgow
Physiotherapy	Coventry University
Politics	University of Warwick
Politics and International Relations	Royal Holloway, University of London
Politics and International Relations	University of Leicester
Professional Policing	University of Plymouth
Psychology	Coventry University
Psychology	Manchester Metropolitan University
Psychology	University of Birmingham
Psychology	University of the West of England (Bristol)
Psychology	University of Warwick
Psychology	University of Winchester
Psychology (with Professional Placement)	University of Reading
Religious Studies and Philosophy	Cardiff University
Science (Integrated Honours Programme)	University of Nottingham
Sociology	University of York
Sport and Exercise Medical Sciences	King's College London
Sport and Exercise Science	Sheffield Hallam University
Sports Business Management	Manchester Metropolitan University
Sports Business Management	Manchester Metropolitan University
Sports Marketing Management	Manchester Metropolitan University

A number of students have progressed on to college-based further education courses. Several former students are undertaking apprenticeships across a range of industries and with notable organisations including Jaguar Land Rover, Coventry Building Society and HM Armed Forces. Some students have entered work-based training programs including in the hospitality and retail sectors. A number of students are undertaking a Gap Year – either to travel or to work prior to starting university next year. A small number of students have gone straight in to full-time employment.

We are so proud of them all and wish them every success in their chosen pathways.

SIXTH FORM STUDENT LEADERSHIP TEAM 2024



Year on year
our students
achieve **A level
grades** that
are well above
the national
average



MYTON  SCHOOL

Myton School, Myton Road, Warwick CV34 6PJ | T: 01926 493805 |
E: sixthform@myton.co.uk www.mytonschool.co.uk/sixthform
Follow us on Twitter @MytonSchool | Like us on Facebook Myton School – Official